



ធនាគារជាតិ នៃ កម្ពុជា
NATIONAL BANK OF CAMBODIA

ព្រឹត្តិបត្រស្ថិតិសេដ្ឋកិច្ច និងរូបិយវត្ថុ Economic and Monetary Statistics Bulletin

ខែកញ្ញា ឆ្នាំ២០២៥
SEPTEMBER 2025



លេខ៣៧៩- ឆ្នាំទី៣៣
SERIES NO. 379- 33RD YEAR

Contents

Page

- Notes.....	1
- Introduction	1
- Exchange Rate.....	1
- Money Supply	2
- Net Domestic Assets of the Depository Corporations	2
- Net Foreign Assets of the Depository Corporations	3
- Other Depository Corporations Survey	3
- Other Financial Corporations Survey	3
- Interest Rates on Loans and Deposits.....	4
- Foreign Tourist Arrivals	4
- International Trade in Goods.....	5
Table 1 : Consumer Price Index and Inflation Rate	6
Table 2 : Consumer Items Showing Price Increased in May 2025	7
Table 3 : Gross Domestic Product	8
Chart 1 : GDP by Economic Activity (At Constant 2014 Prices).....	8
Chart 2 : GDP by Economic Activity (At Current Prices).....	8
Table 4 : Residential Property Price Index.....	9
Chart 3 : RPPI Month on Month Change.....	9
Chart 4 : RPPI Year on Year Change	9
Table 5 : Approved Investment Projects by Sectors	10
Chart 5 : Investment Fixed Assets by Sectors.....	10
Chart 6 : Numbers of Investment Projects by Sectors	10
Table 6 : Approved Investment Projects by Major Countries	11
Table 7 : Daily Exchange Rate in May 2025 (KHR/USD)	12
Table 8 : Monthly Exchange Rate (KHR/USD, End-Period).....	13
Chart 7 : Trend of Monthly Exchange Rate.....	13
Table 9 : The Value of KHR Against Other Currencies (Official Buying Rates, End-Period).....	14
Table 10 : Deposit Money Bank's Interest Rates on Deposits and Loans in KHR	15
Table 11 : Central Bank Survey	16
Table 12 : Other Depository Corporations Survey.....	17
Table 13 : Depository Corporations Survey.....	18
Table 14 : Other Financial Corporations Survey.....	19
Table 15 : Financial Corporations Survey.....	20
Chart 8 : Financial Corporations Survey.....	21
Chart 9 : Monetary Aggregates Components.....	21
Table 16 : Credit Granted by Depository Institutions Classified by Industry.....	22
Chart 10 : Credit Granted by Depository Institutions Classified by Industry.....	22
Table 17 : Credit Granted by Non-Depository Institutions Classified by Industry	23
Chart 11 : Credit Granted by Non-Depository Institutions Classified by Industry	23
Table 18 : Monthly Change of Credit Granted by Depository Institutions Classified by Industry.....	24
Table 19 : Monthly Change of Credit Granted by Non-Depository Institutions Classified by Industry	25
Table 20 : Deposits with Deposit Money Banks	26
Chart 12 : Deposits with Deposit Money Banks Classified by Currency, as of May 2025 (% of Total Deposits)	26
Table 21 : Monthly Change of Deposits with Deposit Money Banks.....	27
Chart 13 : Deposits in KHR Classified by Type, as of May 2025 (% of Total KHR Deposits)	28
Chart 14 : Deposits in Foreign Currency Classified by Type, as of May 2025 (% of Total FCD)	28
Table 22 : Credit Granted by Micro-Finance Institutions and Non-Government Organizations	29
Table 23 : KHR-Denominated Checks Clearing Through Clearing House	30
Table 24 : USD-Denominated Checks Clearing Through Clearing House.....	31
Table 25 : Visitor Arrivals in Cambodia.....	32
Table 26 : Cambodia's Imports and Exports.....	33
Table 27 : The Banking System in Cambodia.....	34-35

Notes

Inquiries

For further information about this Monetary and Financial Statistics and related statistics, please contact the Statistics Department, Directorate General of Policy and International Cooperation, National Bank of Cambodia on (855) 23 722 563-1115 or by email at: statistics@nbc.gov.kh.

Forthcoming issues

Issue	Expected
<i>September 2025</i>	<i>02 September 2025</i>

Changes in this issue

This release included revisions in Credit Granted by DTIs and NDTIs.

The revisions on the Credit Granted by DTIs and NDTIs started from December 2024 onward by separating DTIs and NDTIs.

These revisions have been made mainly due to the changes in data sources and compilation methodologies.

Changes in next issue

No change will be made.

Abbreviations

CPI	Consumer Price Index
DTIs	Deposit-Taking Institutions
GDP	Gross Domestic Product
M2	Broad Money
MDI	Microfinance Deposit-Taking Institutions
MFI	Microfinance Institutions
MFS	Monetary and Financial Statistics
MFSMCG	Monetary and Financial Statistics Manual and Compilation Guide
NBC	National Bank of Cambodia
NDTIs	Non-Deposit-Taking Institutions
RPPI	Residential Property Price Index

Rounding

Any discrepancies between totals and the sum of the component aggregates in this publication are due to rounding.

Unit of Currency

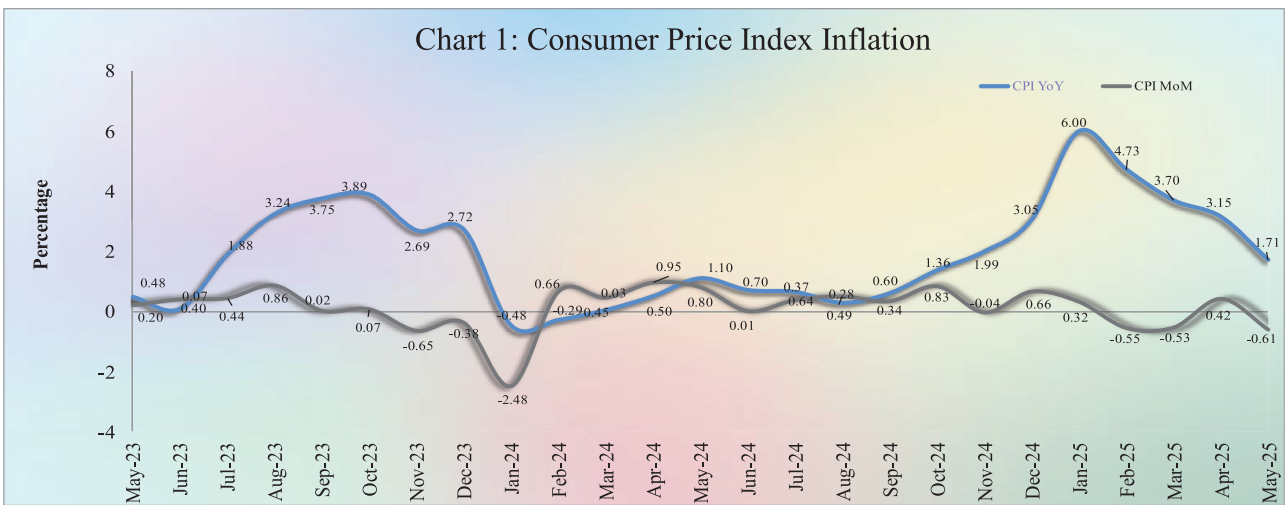
KHR 1 billion = KHR 1,000,000,000

Introduction

Headline consumer price inflation in May 2025 decelerated over the previous month, while the Khmer riel (KHR) slightly depreciated against US dollar. During this period, residents' deposits in the banking sector increased marginally, while credit to private sector took a slight drop. In the meantime, international trade in goods continued to show a deficit.

Consumer Price Index

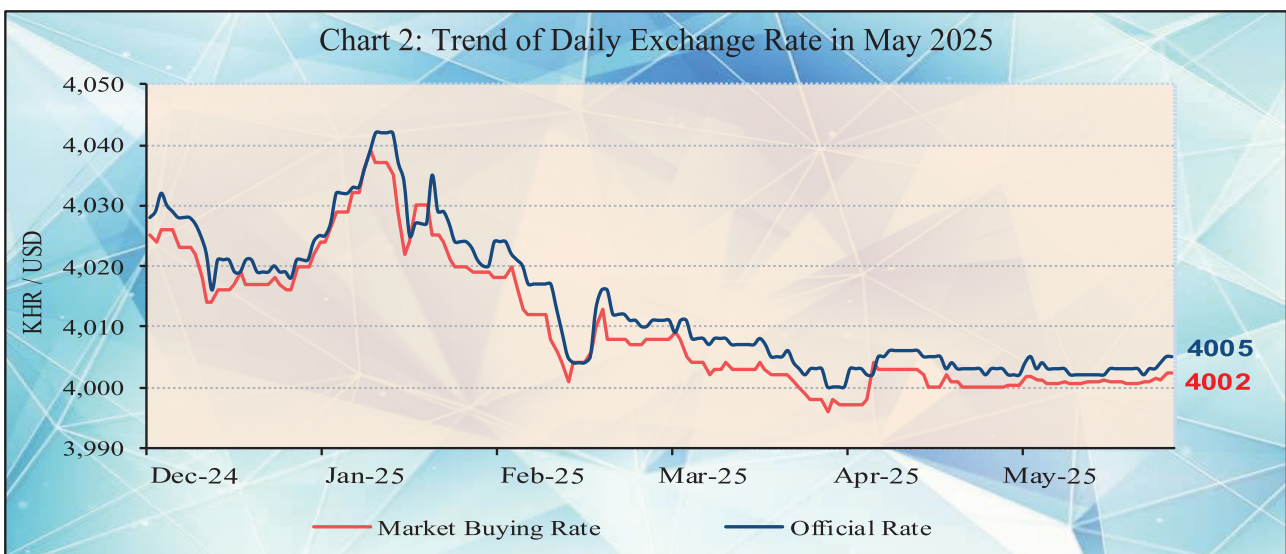
The consumer price inflation in Phnom Penh (month-on-month) was -0.61% in May 2025 from 0.42% in April, in which ten of the eleven group indexes increased, while the other remaining one group index remained the same.



During the same period, the year-on-year percentage change of the CPI for all items drop to 1.7% from 3.2% in April, which was mainly due to the increase in prices of food and non-alcoholic beverages, housing, water, electricity, gas and other fuels, and restaurants.

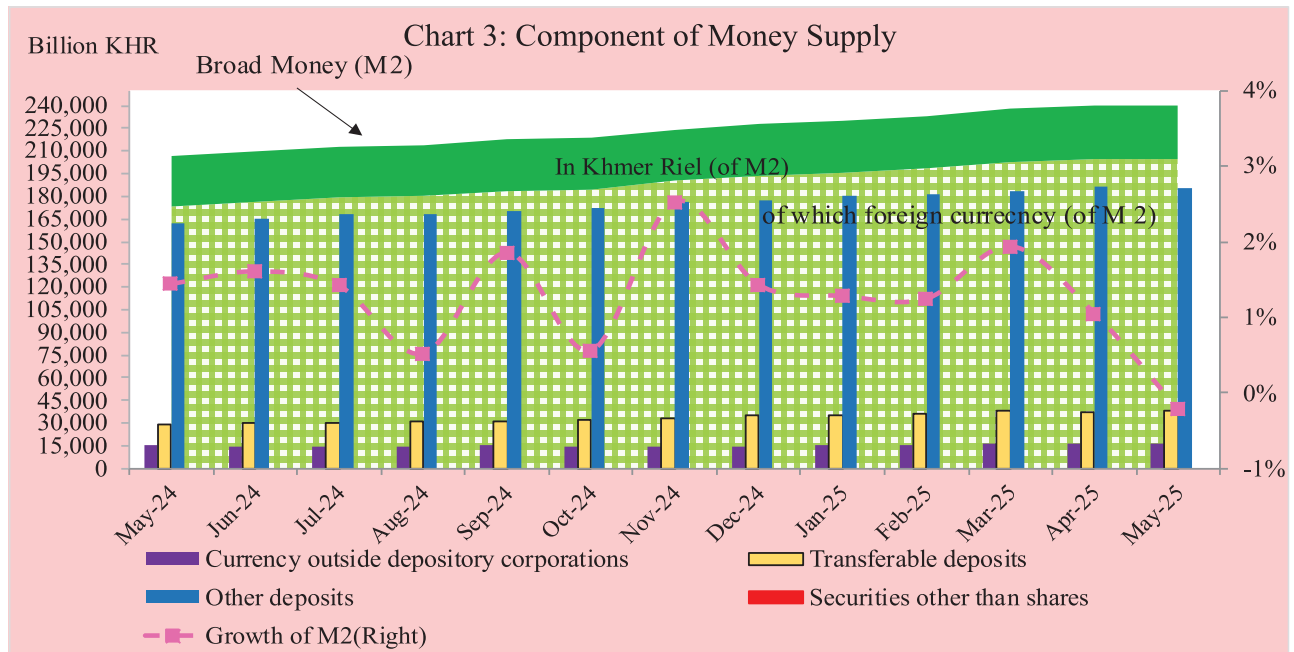
Exchange Rate

The exchange rate (market buying rate) was KHR 4,002 per USD in May 2025, depreciated by 0.06% over April.



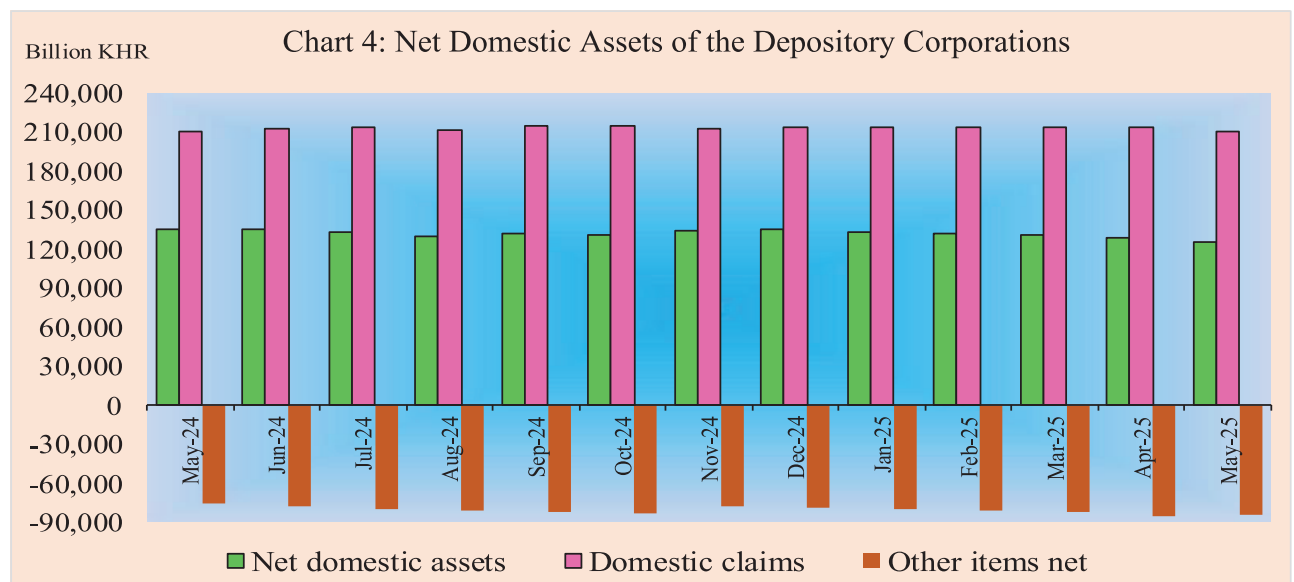
Money Supply

Broad money (M2) increased to KHR 239,704.34 billion in May 2025, decreased by 0.2% compared to April. The main components of M2 indicated that currency outside depository corporations declined by 4.5%, other deposits dropped by 0.2%, while transferable deposits rose by 1.8%.



Net Domestic Assets of the Depository Corporations

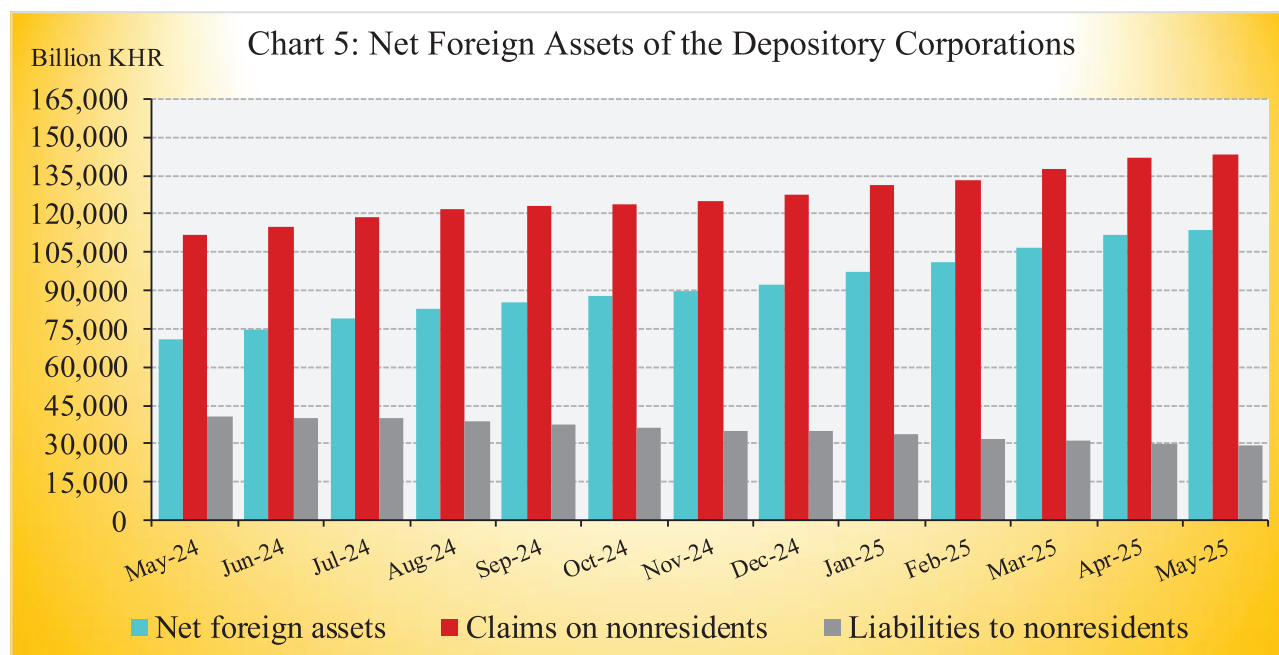
Net domestic assets of the depository corporations decreased by 2.2% to KHR 125,754.1 billion in May 2025 compared to April. This was due to the decrease of 1.8% in net domestic credit, while other items net increased by 1.2%.



The reduction in net domestic credit was due to the decrease of 1.3% in credit to private sector and 4% in net credit to nonfinancial public sector, while net credit to other financial corporations rose by 1.1%. The rise in other items net was due to the surge of 9.6% in others, while capital accounts declined by 4.5%.

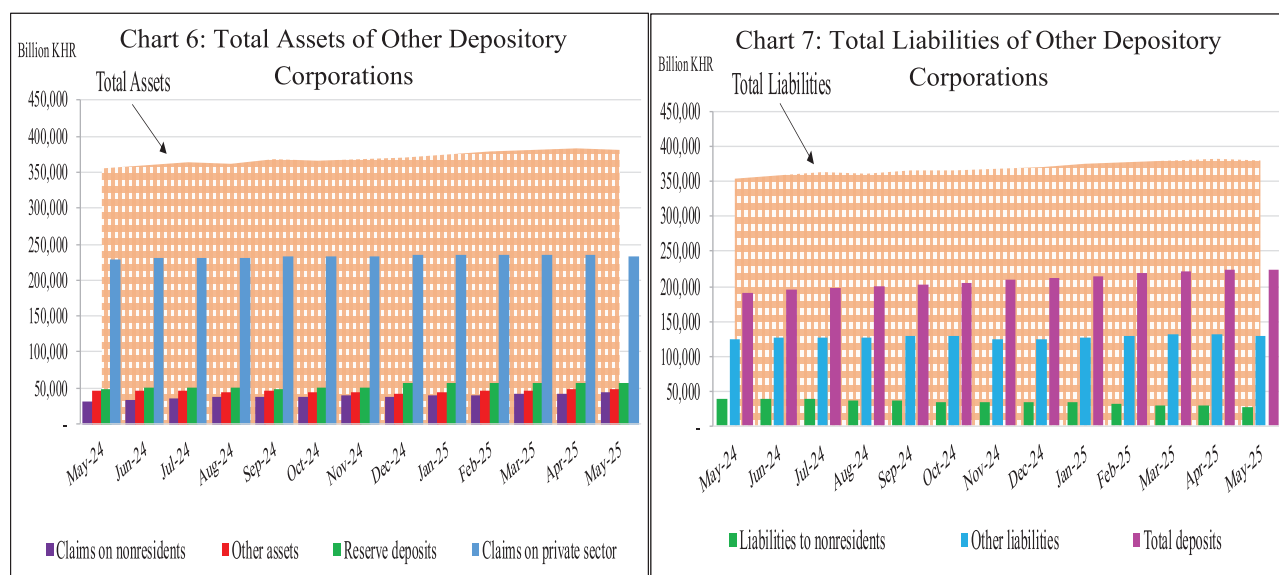
Net Foreign Assets of the Depository Corporations

Net foreign assets of the depository corporation increased to KHR 113,950.2 billion in May 2025, grew by 2.1% from the previous month. This was due to the increase of 2.2% and 0.4% in other foreign assets and gross foreign reserve, respectively, while foreign liabilities declined by 3.5%.



Other Depository Corporations Survey

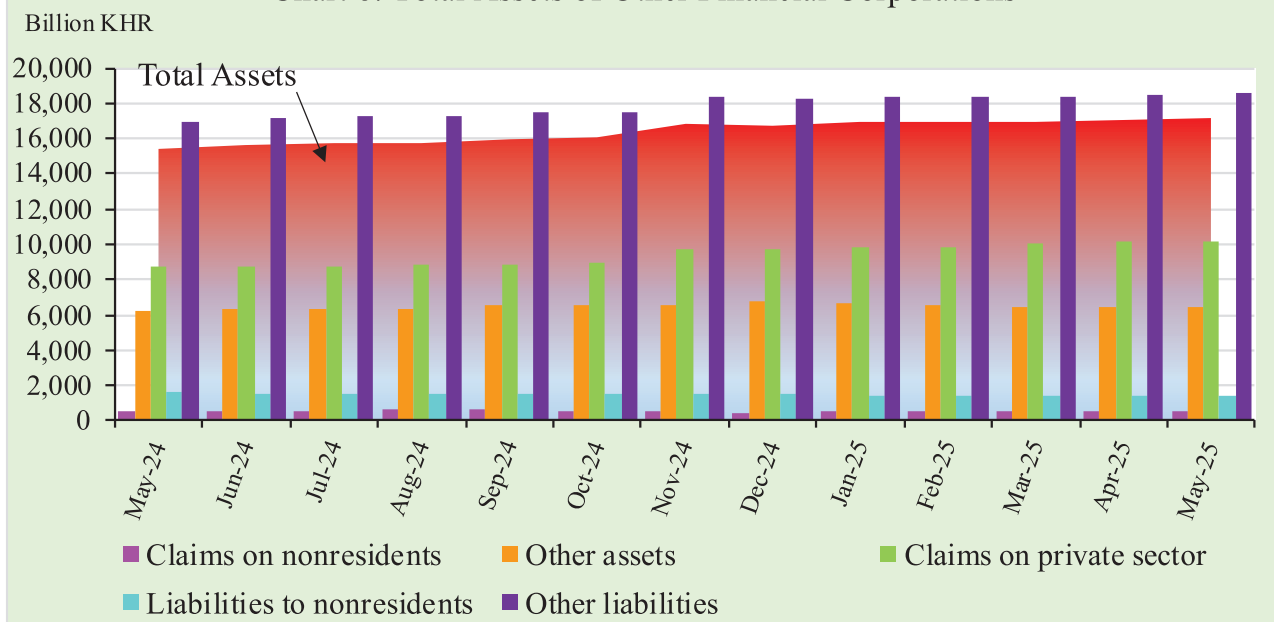
Total assets of other depository corporations (including commercial banks and microfinance deposit-taking institutions) were KHR 381,546 billion, decreased by 0.5% in May 2025 compared to the previous month.



Other Financial Corporations Survey

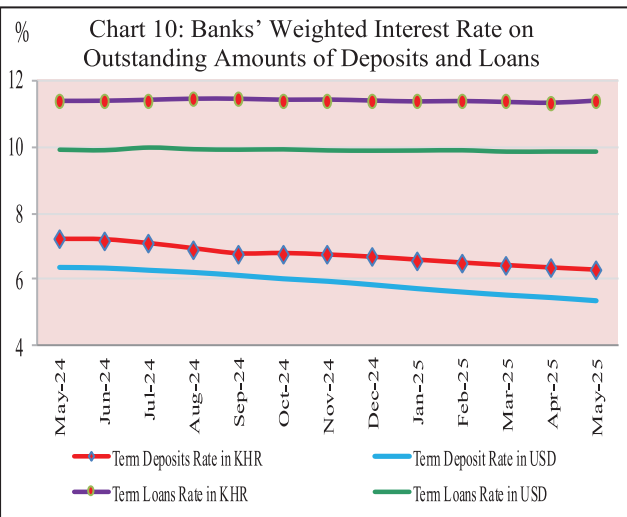
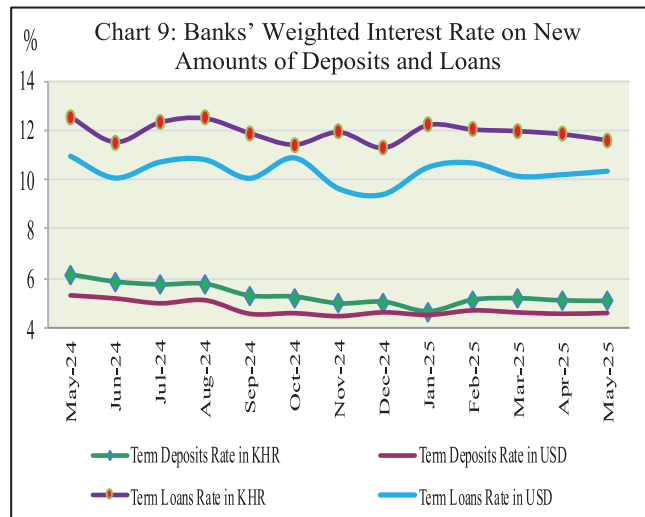
Total assets of other financial corporations (including specialized banks, MFIs, and insurance companies) were KHR 17,221 billion, increased by 0.8% in May 2025 compared to April.

Chart 8: Total Assets of Other Financial Corporations



Interest Rates on Deposits and Loans

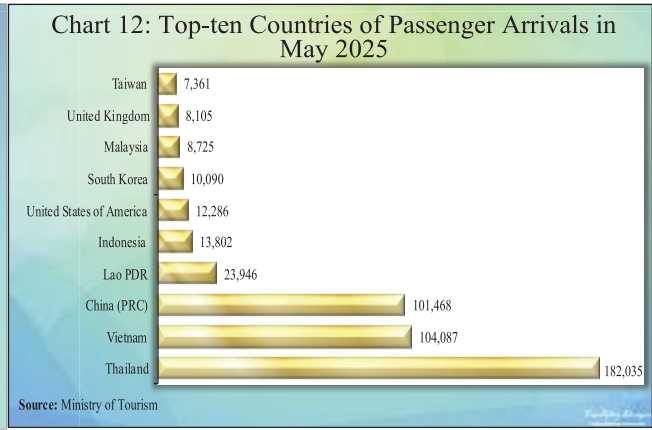
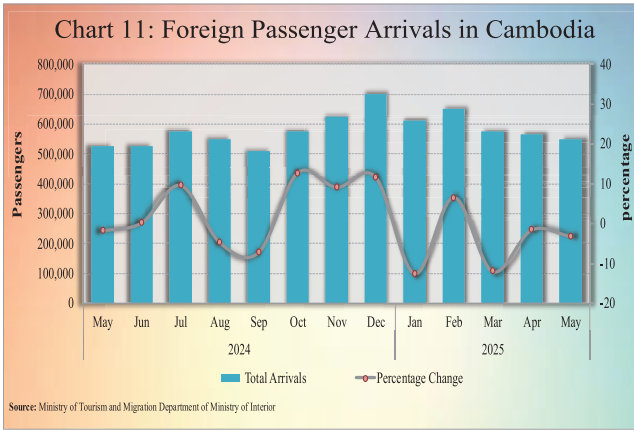
Interest rate on deposits and loans of banking sector in May 2025 showed that the (new amount) weighted average interest rate on term deposits in KHR decreased by 0.02% to 5.09%, while term deposits in USD increased by 0.03% to 4.63%. At the same time, the weighted average interest rate on term loans in KHR declined by 0.25% to 11.63%, while term loans in USD increased by 0.14% to 10.35%.



Foreign Tourist Arrivals

In May 2025, the total number of passenger arrivals was 547,373, declined by 3.2% after the decrease of 1.6% in the previous month. The main purposes of the passenger arrivals in Cambodia were for vacation, and business and professional, which were accounted for 72.2% and 26.2% of the total, respectively.

Most of the foreign passengers were from Thailand, Vietnam, China P.R.C., Laos PDR, Indonesia, United States of America, South Korea, Malaysia, United Kingdom, and Taiwan.



International Trade in Goods

International trade in goods showed a deficit of KHR 1,769.3 billion (-14.2%) in May 2025, following the deficit of KHR 2,031.8 billion (-18.2%) in April 2025.



The major components of total exports were Garment, Other Textile Products, Footwear, Fish and other agricultural products, Electrical Part, Bicycle, Wood Products, Rice, Rubber, and Vehicle parts. In addition, the major components of total imports were Fabric, Oil, Vehicle, Equipment Construction, Food and Beverage, Other Electronic Equipment, Steel, Garment, Fertilizer, Medicine, and Cigarette.

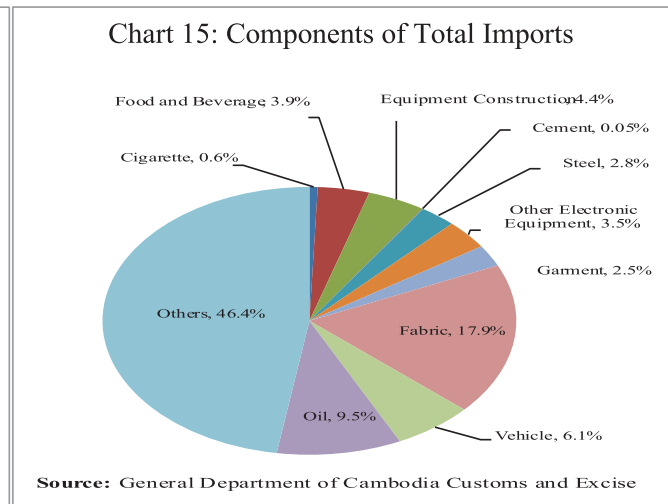
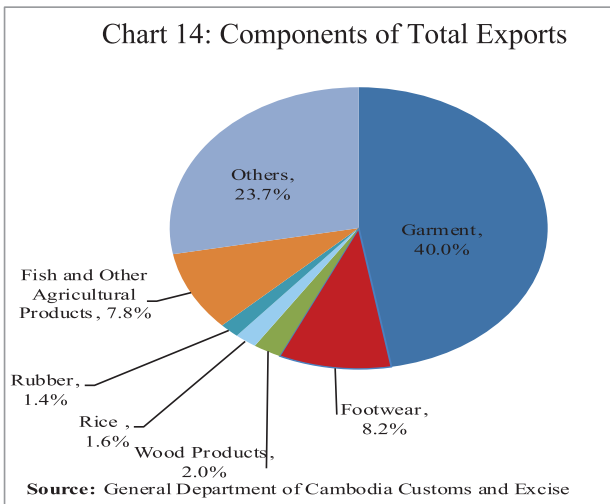


Table 1: Consumer Price Index and Inflation Rate

1. Consumer Price Index (CPI) and Component Indices (Oct-Dec. 2006 = 100)	Jan-25	Feb-25	Mar-25	Apr-25	May-25
CPI (all items)	209.70	208.54	207.42	208.29	207.03
Food and Non-Alcoholic Beverages	264.92	263.07	261.46	262.88	260.83
Alcoholic Beverages, Tobacco and Narcotics	187.20	187.22	187.10	187.28	186.73
Clothing and Footwear	195.96	194.77	193.85	194.85	193.80
Housing, Water, Electricity, Gas and other Fuels	144.09	143.80	143.41	143.82	143.28
Furnishings and Household Maintenance	167.31	167.06	166.95	167.20	166.85
Health	145.08	144.62	144.06	144.53	143.82
Transport	123.15	123.10	121.71	120.43	120.18
Communication	66.65	66.62	66.59	66.64	66.60
Recreation and Culture	135.84	135.92	134.99	135.20	134.13
Education	179.93	179.93	179.93	179.93	179.93
Restaurants	333.08	329.55	328.50	332.47	330.87
Miscellaneous Goods and Services	175.81	175.68	175.48	175.87	175.36
2. Percentage Change in the CPI and its Components					
2.1 Month on Month Change (%)					
CPI (all items)	0.32	-0.55	-0.53	0.42	-0.61
Food and Non-Alcoholic Beverages	0.44	-0.70	-0.61	0.55	-0.78
Alcoholic Beverages, Tobacco and Narcotics	0.42	0.01	-0.07	0.10	-0.29
Clothing and Footwear	0.75	-0.60	-0.47	0.51	-0.54
Housing, Water, Electricity, Gas and other Fuels	0.39	-0.20	-0.27	0.28	-0.37
Furnishings and Household Maintenance	0.26	-0.15	-0.07	0.15	-0.21
Health	0.14	-0.32	-0.39	0.33	-0.49
Transport	-0.55	-0.03	-1.13	-1.05	-0.20
Communication	0.03	-0.05	-0.05	0.07	-0.06
Recreation and Culture	0.62	0.06	-0.68	0.16	-0.80
Education	0.74	0.00	0.00	0.00	0.00
Restaurants	-0.01	-1.06	-0.32	1.21	-0.48
Miscellaneous Goods and Services	0.38	-0.07	-0.12	0.22	-0.29
2.2 Year on Year Change (%)					
CPI (all items)	6.00	4.73	3.70	3.15	1.71
Food and Non-Alcoholic Beverages	7.83	6.57	5.19	4.72	2.43
Alcoholic Beverages, Tobacco and Narcotics	4.05	3.86	3.66	2.49	2.08
Clothing and Footwear	10.44	9.17	7.66	7.19	5.20
Housing, Water, Electricity, Gas and other Fuels	3.94	3.23	2.66	2.47	1.66
Furnishings and Household Maintenance	3.38	3.06	2.74	2.48	1.92
Health	2.31	1.72	1.04	0.74	-0.08
Transport	-0.41	-2.77	-3.73	-5.94	-3.84
Communication	0.48	0.31	0.27	0.22	0.10
Recreation and Culture	5.35	4.78	3.46	2.78	1.59
Education	4.84	4.43	3.61	2.63	2.27
Restaurants	5.00	2.80	2.69	2.48	1.35
Miscellaneous Goods and Services	4.22	3.78	3.35	3.09	2.46
3. Three-month moving average CPI (All Items)	208.80	209.09	208.55	208.08	207.58
Year on Year Change (%)	3.66	4.58	4.81	3.85	2.85
4. Twelve-month moving average CPI (All Items)	204.83	205.62	206.23	206.76	207.05
Year on Year Change (%)	1.32	1.74	2.04	2.26	2.31

Source: National Institute of Statistics

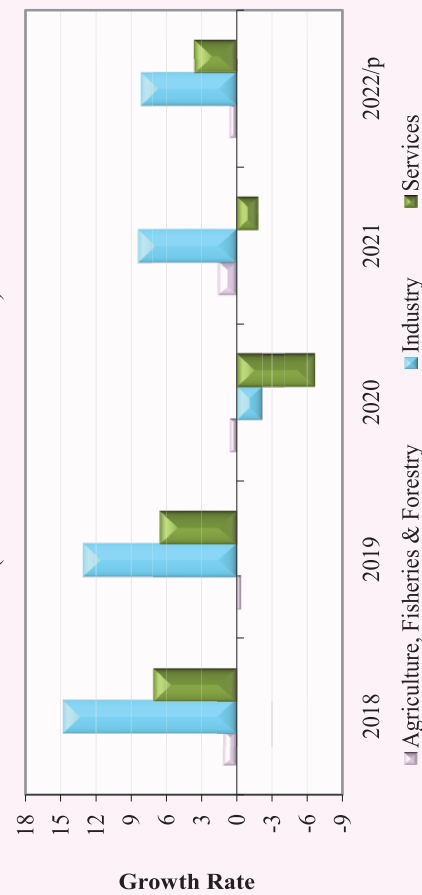
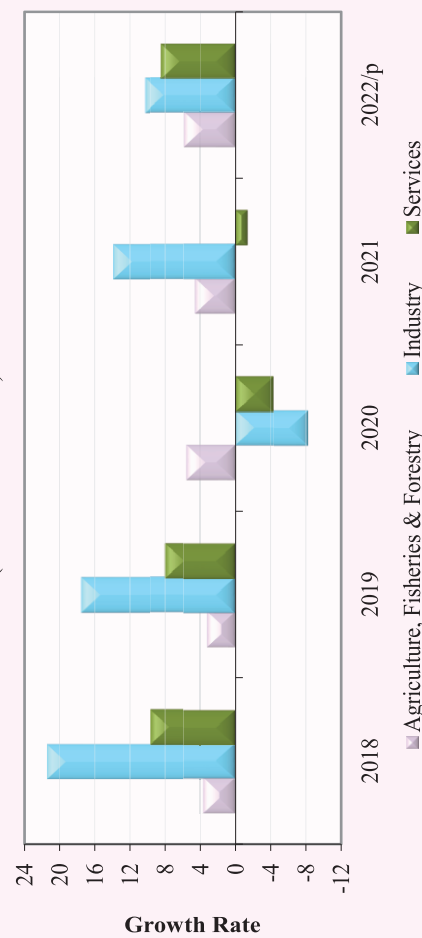
Table 2: Consumer Items Showing Price Decreased in May 2025

No.	Description	Weight	Index			Percentage Change	
			May-24	Apr-25	May-25	Monthly	Yearly
1	SUGAR, JAM, HONEY, CHOCOLATE AND CONFECTIONERY	1.489	176.45	186.19	182.10	-2.2	3.2
2	MINERAL WATERS, SOFT DRINKS, FRUIT AND VEGETABLE JUICES	0.748	154.28	155.50	152.34	-2.0	-1.3
3	LEAF AND STALK VEGETABLES (FRESH)	2.031	255.43	264.33	260.23	-1.6	1.9
4	PREPARED AND PRESERVED VEGETABLES	0.337	195.86	193.31	190.33	-1.5	-2.8
5	FRUIT VEGETABLES	1.138	392.09	430.20	424.36	-1.4	8.2
6	DIESEL	0.144	124.86	108.33	106.88	-1.3	-14.4
7	OTHER ARTICLES OF CLOTHING AND CLOTHING ACCESSORIES	0.059	165.47	175.03	172.71	-1.3	4.4
8	TUBERS AND MUSHROOMS	0.439	237.68	248.57	245.28	-1.3	3.2
9	FRESH FRUITS	4.094	274.70	289.88	286.09	-1.3	4.1
10	CHICKEN (FRESH)	1.303	239.33	250.70	247.48	-1.3	3.4
11	LIQUID FUELS	0.099	164.34	163.54	161.61	-1.2	-1.7
12	PROCESSED EGGS	0.079	176.66	177.73	175.64	-1.2	-0.6
13	ROOT VEGETABLES	0.456	308.95	332.62	328.78	-1.2	6.4
14	FOOD PRODUCTS NEC	1.404	259.18	273.88	270.75	-1.1	4.5
15	NOODLES	1.008	248.03	260.96	258.11	-1.1	4.1
16	PULSES/LEGUMES	0.413	429.58	300.63	297.39	-1.1	-30.8
17	OTHER APPLIANCES, ARTICLES AND PRODUCTS FOR PERSONAL CARE	0.399	179.80	190.95	189.05	-1.0	5.1
18	TOOLS AND EQUIPMENT FOR HOUSE AND GARDEN	0.017	239.00	251.74	249.32	-1.0	4.3
19	FRESH EGGS	1.013	167.85	163.29	161.77	-0.9	-3.6
20	DAIRY PRODUCTS	1.552	181.68	192.67	190.94	-0.9	5.1
21	HOUSEHOLD TEXTILES	0.015	208.70	221.43	219.49	-0.9	5.2
22	SOLID FUELS	1.475	256.95	261.59	259.31	-0.9	0.9
23	TRADITIONAL CAKES	0.561	224.43	238.50	236.44	-0.9	5.4
24	BEER	0.532	134.96	136.35	135.23	-0.8	0.2
25	RECREATION AND CULTURE	2.912	132.03	135.20	134.13	-0.8	1.6
26	MATERIALS FOR THE MAINTENANCE AND REPAIR OF THE DWELLING	3.663	170.76	182.54	181.14	-0.8	6.1
27	OTHER GRAINS	0.090	366.09	395.69	392.67	-0.8	7.3
28	PROCESSED FISH AND SEAFOOD	1.646	310.47	327.40	324.90	-0.8	4.6
29	DRIED AND PRESERVED FRUITS	0.086	201.12	196.69	195.26	-0.7	-2.9
30	MEDICAL PRODUCTS, APPLIANCES AND EQUIPMENT	3.588	143.09	143.29	142.28	-0.7	-0.6
31	TRANSPORT SERVICES	0.812	170.69	167.99	166.82	-0.7	-2.3
32	CLOTHING MATERIALS	0.334	206.86	220.94	219.44	-0.7	6.1
33	SEAFOOD (FRESH, CHILLED OR FROZEN)	0.229	267.33	278.80	277.12	-0.6	3.7
34	DRIED NUTS AND EDIBLE SEEDS	0.556	259.50	256.45	254.95	-0.6	-1.8
35	CLOTHING FOR WOMEN AND GIRLS	1.065	180.57	190.43	189.33	-0.6	4.9
36	OTHER CLOTHING (BOTH SEXES)	0.222	155.49	162.57	161.67	-0.6	4.0
37	SPARE PARTS AND ACCESSORIES FOR PERSONAL TRANSPORT EQUIPMENT	0.084	307.73	319.41	317.69	-0.5	3.2
38	BEEF (FRESH)	2.165	286.11	296.17	294.65	-0.5	3.0
39	SPIRITS	0.014	173.70	172.41	171.56	-0.5	-1.2
40	RESTAURANTS AND HOTELS	5.861	326.45	332.47	330.87	-0.5	1.4

Source: National Institute of Statistics

Table 3: Gross Domestic Product (GDP)

	At Constant 2014 Prices					At Current Prices				
	2018	2019	2020	2021	2022/p	2018	2019	2020	2021	2022/p
GDP in Billion KHR	121,026	130,632	125,987	129,880	136,508	134,280	148,985	142,503	150,793	164,059
GDP in Million USD	29,772	32,322	31,240	31,964	33,446	32,931	36,344	34,835	36,726	39,491
GDP % Growth Rate	8.8	7.9	-3.6	3.1	5.1	12.9	11.0	-4.4	5.8	8.8
GDP % Growth Rate, by Economic Activity										
Agriculture, Fisheries & Forestry	1.1	-0.4	0.6	1.5	0.6	3.7	3.2	5.5	4.6	5.8
Industry	14.8	13.0	-2.2	8.4	8.2	21.4	17.5	-8.2	13.9	10.3
Services	7.1	6.6	-6.7	-1.8	3.6	9.7	8.0	-4.3	-1.4	8.5
GDP Per Capita in Million KHR	7.6	8.1	7.7	7.8	8.1	8.5	9.3	8.7	9.1	9.7
GDP Per Capita in USD	1,882	2,010	1,912	1,926	1,986	2,081	2,260	2,132	2,213	2,345

Chart 1: GDP by Economic Activity
(At Constant 2014 Prices)**Chart 2: GDP by Economic Activity**
(At Current Prices)

p/: preliminary estimates

Source: National Institute of Statistics

Table 4: Residential Property Price Index (RPPI)

	Mar-24	Apr-24	May-24	Jun-24	Jul-24	Aug-24	Sep-24	Oct-24	Nov-24	Dec-24	Jan-25	Feb-25	Mar-25	Apr-25	May-25	
Residential Property Price Index (2020 =100)																
Overall RPPI	107.0	105.3	105.5	105.6	106.7	105.4	105.0	104.2	104.3	105.5	103.6	103.0	101.0	100.7	100.7	
RPPI in Phnom Penh	107.5	105.6	106.4	107.5	108.5	107.3	106.5	105.8	105.8	106.9	105.0	104.5	102.9	102.5	101.9	
RPPI in Other Provinces	102.1	100.9	98.2	94.2	95.6	94.0	95.1	93.8	94.7	96.3	94.2	93.0	89.5	89.9	92.1	
Month on Month Change (%)																
Overall RPPI	-0.9	-0.3	0.1	0.7	1.1	-1.2	-0.3	-1.3	-0.7	1.5	0.0	-0.6	-1.9	-0.3	-0.1	
RPPI in Phnom Penh	-0.7	-0.3	-0.2	1.3	1.3	-1.1	-0.2	-1.2	-1.3	1.2	0.1	-0.5	-1.6	-0.4	-0.5	
RPPI in Other Provinces	-1.5	-0.1	1.4	-1.7	0.1	-1.7	-0.8	-1.7	2.4	3.1	-0.8	-1.2	-3.8	0.4	2.5	
Year on Year Change (%)																
Overall RPPI	-3.9	-5.5	-5.0	-5.0	-3.3	-5.0	-4.9	-5.0	-3.9	-2.0	-4.5	-4.4	-5.6	-4.3	-4.6	
RPPI in Phnom Penh	-5.2	-6.9	-5.7	-4.9	-2.9	-4.6	-4.4	-4.3	-3.1	-1.4	-4.2	-3.7	-4.3	-3.0	-4.2	
RPPI in Other Provinces	5.0	3.9	0.2	-4.5	-4.2	-6.0	-6.9	-8.2	-7.2	-4.9	-5.6	-8.3	-12.3	-10.9	-6.3	

Note:

- The methodology used to generate the RPPI index is the time-dummy hedonic method, which complies with the IMF's RPPI Practical Compilation Guide published in 2020 (<https://www.imf.org/en/Data/Statistics/RPPI-guide>).

- The methodology for the RPPI has been improved which has led to a revision to the previously published data for the RPPI.

*Revised data

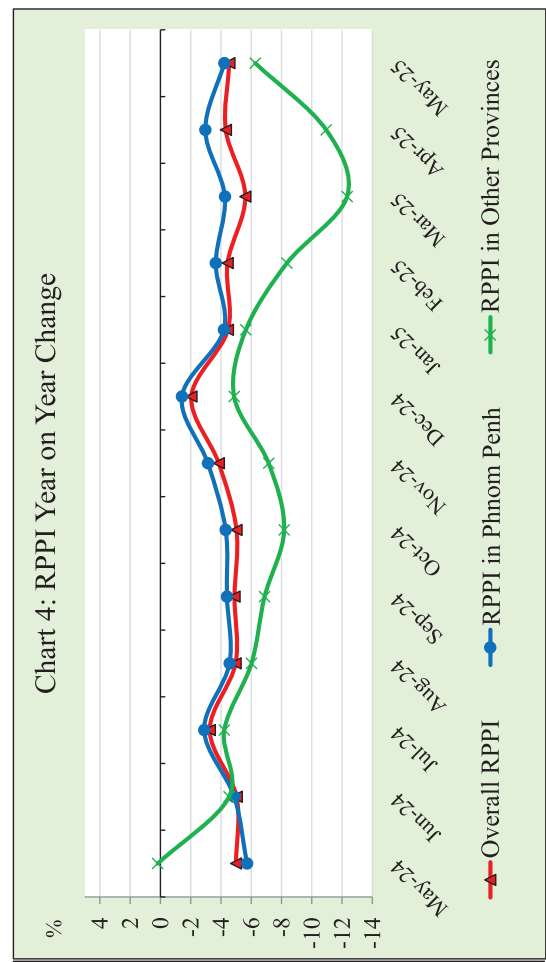
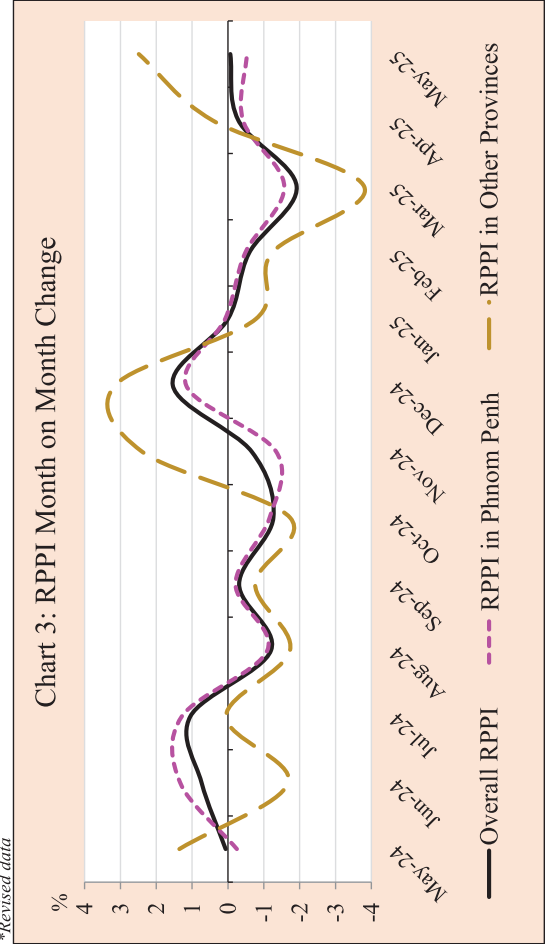


Table 5: Investment Projects Approved by Sectors

(In Million USD)

Sector	Agriculture		Industries		Services		Tourism		Energy		Health care (hospital)		Agro-Industry		Civil Engineering		Infrastructure		Mines		Other		Total			
	Projects	Fixed Assets	Projects	Fixed Assets	Projects	Fixed Assets	Projects	Fixed Assets	Projects	Fixed Assets	Projects	Fixed Assets	Projects	Fixed Assets	Projects	Fixed Assets	Projects	Fixed Assets	Projects	Fixed Assets	Projects	Fixed Assets	Projects	Fixed Assets		
2018																										
Total	13	444.2	115	984.0	10	2,869.9	12	1,577.8	-	-	-	-	-	-	-	-	-	-	-	-	-	-	150	5,875.8		
*2019																										
Total	2	29.5	163	729.7	-	-	18	5,461.1	4	160.4	-	-	-	-	-	-	7	784.8	-	-	-	-	4	14.6	194	7,180.2
*2020																										
Total	4	83.7	132	1049.0	1	102.0	6	3850.5	6	1742.7	-	-	-	-	-	-	3	601.7	-	-	-	-	2	99.8	154	7,529.5
*2021																										
Total	1	11.2	127	1716.8	-	-	2	127.8	6	1742.7	-	-	-	-	-	-	2	9.9	-	-	-	-	6	94.0	144	3,702.6
*2022																										
Total	3	61.3	145	1,326.4	1	27.5	3	461.4	1	389.4	-	-	-	-	-	-	6	103.7	1	13.0	12	1411.3	172	3,794.1		
*2023																										
Total	5	127.0	223	2,071.2	-	-	2	37.5	4	768.1	-	-	-	-	-	-	2	1,390.0	-	-	1	5.5	237	4,399.3		
*2024																										
Q1	4	66.6	84	546.6	2	137.2	2	588.9	1	441.5	-	-	-	-	-	-	1	108.8	-	-	6	56.4	100	1,946.0		
Q2	1	5.5	71	460.2	-	-	-	-	1	65.5	-	-	-	-	-	-	-	-	-	-	2	85.0	75	616.3		
Q3	1	25.5	104	1,473.6	-	-	-	-	1	7.3	-	-	-	-	-	-	-	-	-	-	3	46.2	109	1,552.6		
Q4	1	5.2	86	586.9	-	-	1	70.0	1	10.9	-	-	-	-	-	-	1	15.0	1	13.0	2	35.6	93	736.7		
Total	7	102.9	345	3,067.3	2	137.2	3	658.9	4	525.3	-	-	-	-	-	-	2	123.8	1	13.0	13	223	377	4,851.6		
2025																										
Q1	-	-	199	1,708.8	-	-	-	-	3	248.2	-	-	-	-	-	-	-	-	1	6.5	6	87.2	209	2,050.7		
Total	-	-	199	1,708.8	-	-	-	-	3	248.2	-	-	-	-	-	-	-	-	1	6.5	6	87.2	209	2,050.7		

Chart 5: Investment Fixed Assets by Sectors

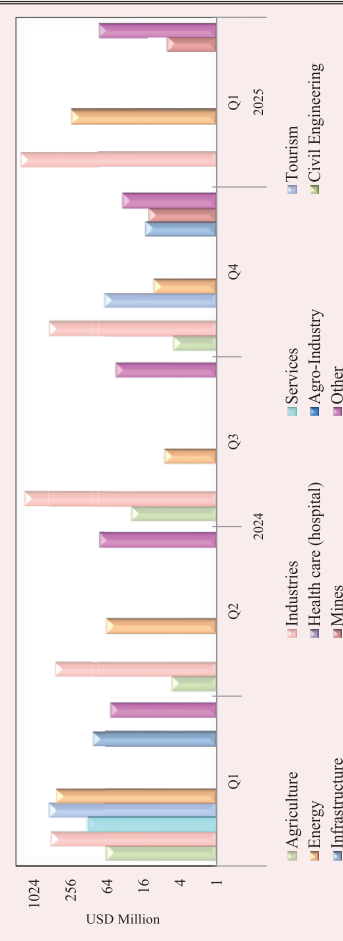
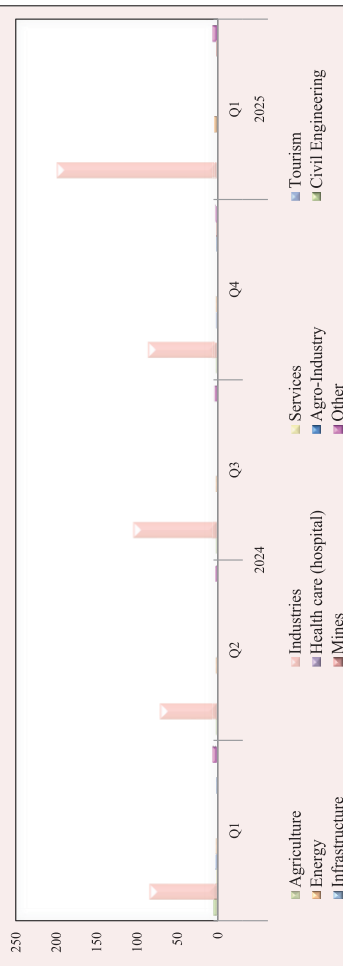


Chart 6: Number of Investment Projects by Sectors



Source: Council for the Development of Cambodia (Classification ISIC)

Included CIB, SEZ (2021), EXP and SUB-COM(2025)

* Revised data

Table 6: Investment Projects Approved by Major Countries*

(In Million USD)

Country	*2023			*2024				2025
	Q2	Q3	Q4	Q1	Q2	Q3	Q4	Q1
Cambodia	154.5	140.9	676.9	1,278.4	79.2	50.4	132.9	317.5
China	480.1	1,839.7	292.7	486.2	358.6	1,143.7	459.1	1,222.8
Korea	11.6	4.3	-	9.5	5.0	-	-	-
United States	5.4	10.1	-	10.0	1.5	10.5	5.7	4.4
Thailand	19.5	-	-	-	-	-	15.6	-
Vietnam	73.4	-	-	49.0	11.2	11.6	5.2	41.3
Malaysia	-	91.2	-	6.1	-	38.6	-	1.9
Singapore	-	86.2	20.5	48.7	25.0	113.9	60.3	73.1
Taiwan	4.0	46.2	11.5	24.3	18.5	25.1	6.6	5.2
Australia	-	-	-	-	5.7	-	-	2.6
England	-	-	-	-	-	-	-	13.9
Japan	-	-	2.7	-	1.2	38.5	-	-
Hong Kong	27.4	52.5	25.6	33.7	90.0	105.6	19.2	320.1
Philippines	-	-	-	-	-	5.2	-	-
Others	-	90.0	-	-	20.4	9.5	32.0	97.9
Total	775.9	2,361.2	1,029.9	1,946.0	616.3	1,552.6	736.7	2,100.7
	(Share of Total)							
Cambodia	19.9	6.0	65.7	65.7	12.8	3.2	18.0	15.1
China	61.9	77.9	28.4	25.0	58.2	73.7	62.3	58.2
Korea	1.5	0.2	-	0.5	0.8	-	-	-
United States	0.7	0.4	-	0.5	0.3	0.7	0.8	0.2
Thailand	2.5	-	-	-	-	-	2.1	-
Vietnam	9.5	-	-	2.5	1.8	0.7	0.7	2.0
Malaysia	-	3.9	-	0.3	-	2.5	-	0.1
Singapore	-	3.7	2.0	2.5	4.1	7.3	8.2	3.5
Taiwan	0.5	2.0	1.1	1.2	3.0	1.6	0.9	0.2
Australia	-	-	-	-	0.9	-	-	0.1
England	-	-	-	-	-	-	-	0.7
Japan	-	-	0.3	-	0.2	2.5	-	-
Hong Kong	3.5	2.2	2.5	1.7	14.6	6.8	2.6	15.2
Philippines	-	-	-	-	-	0.3	-	-
Others	-	3.8	-	-	3.3	0.6	4.3	4.7
Total	100.0	100.0	100.0	100.0	100.0	100.0	100.0	100.0

* Fixed Assets

Source: Council for the Development of Cambodia (Cambodian Investment Board)

Table 7: Daily Exchange Rate in May 2025

(KHR/USD)

Day	Parallel Market Rate			Official Rate	Daily Change*	
	Purchase	Sale	Midpoint		Spread	% Change
1	4,000	4,011	4,005	4,003	-0.1	0.0
2	4,000	4,012	4,006	4,002	0.3	0.0
3	4,000	4,012	4,006	4,002	0.0	0.0
4	4,000	4,012	4,006	4,002	0.0	0.0
5	4,002	4,013	4,007	4,004	1.6	0.0
6	4,002	4,013	4,007	4,005	-0.1	0.0
7	4,001	4,012	4,007	4,003	-0.4	0.0
8	4,001	4,012	4,006	4,004	-0.2	0.0
9	4,001	4,012	4,006	4,003	-0.5	0.0
10	4,001	4,012	4,006	4,003	0.0	0.0
11	4,001	4,012	4,006	4,003	0.0	0.0
12	4,001	4,012	4,006	4,003	0.3	0.0
13	4,001	4,011	4,006	4,002	-0.2	0.0
14	4,001	4,011	4,006	4,002	0.0	0.0
15	4,001	4,011	4,006	4,002	0.0	0.0
16	4,001	4,012	4,006	4,002	0.3	0.0
17	4,001	4,012	4,006	4,002	0.0	0.0
18	4,001	4,012	4,006	4,002	0.0	0.0
19	4,001	4,012	4,007	4,002	0.2	0.0
20	4,001	4,012	4,006	4,003	-0.3	0.0
21	4,001	4,011	4,006	4,003	-0.1	0.0
22	4,001	4,011	4,006	4,003	0.2	0.0
23	4,001	4,011	4,006	4,003	-0.3	0.0
24	4,001	4,011	4,006	4,003	0.0	0.0
25	4,001	4,011	4,006	4,003	0.0	0.0
26	4,001	4,011	4,006	4,002	0.1	0.0
27	4,001	4,011	4,006	4,003	0.2	0.0
28	4,002	4,012	4,007	4,003	0.6	0.0
29	4,001	4,011	4,006	4,004	-0.3	0.0
30	4,002	4,012	4,007	4,005	1.0	0.0
31	4,002	4,012	4,007	4,005	0.0	0.0
Average Rate	4,001	4,012	4,006	4,003	0.1	0.0

* Spread of Daily Purchasing Market Rate

Table 8: Monthly Exchange Rate

(KHR/USD, End-Period)

Month	Market Rate				Official Rate
	Purchase	Monthly %Change	Sale	Midpoint	
Dec-15	4,048	0.10	4,055	4,052	4,050
Dec-16	4,039	0.17	4,050	4,045	4,037
Dec-17	4,037	0.07	4,046	4,042	4,037
Dec-18	4,027	-0.27	4,039	4,033	4,018
Dec-19	4,079	0.12	4,089	4,084	4,075
Dec-20	4,069	0.00	4,084	4,077	4,045
Dec-21	4,109	0.17	4,118	4,114	4,074
Dec-22	4,113	0.07	4,123	4,118	4,117
2023					
Aug	4,151	0.65	4,161	4,156	4,158
Sep	4,119	-0.77	4,130	4,125	4,122
Oct	4,129	0.24	4,137	4,133	4,135
Nov	4,113	-0.39	4,123	4,118	4,115
Dec	4,080	-0.80	4,090	4,085	4,085
2024					
Jan	4,080	0.00	4,091	4,086	4,083
Feb	4,064	-0.39	4,073	4,069	4,069
Mar	4,040	-0.59	4,049	4,045	4,041
Apr	4,063	0.57	4,074	4,069	4,064
May	4,093	0.74	4,107	4,100	4,093
Jun	4,109	0.39	4,119	4,114	4,110
Jul	4,106	-0.07	4,115	4,111	4,108
Aug	4,058	-1.17	4,069	4,064	4,057
Sep	4,056	-0.05	4,070	4,063	4,061
Oct	4,063	0.17	4,073	4,068	4,063
Nov	4,025	-0.94	4,040	4,033	4,028
Dec	4,024	-0.02	4,035	4,030	4,025
2025					
Jan	4,018	-0.15	4,032	4,025	4,024
Feb	4,008	-0.25	4,020	4,014	4,011
Mar	3,996	-0.30	4,008	4,002	4,000
Apr	4,000	0.10	4,011	4,006	4,003
May	4,002	0.06	4,012	4,007	4,005

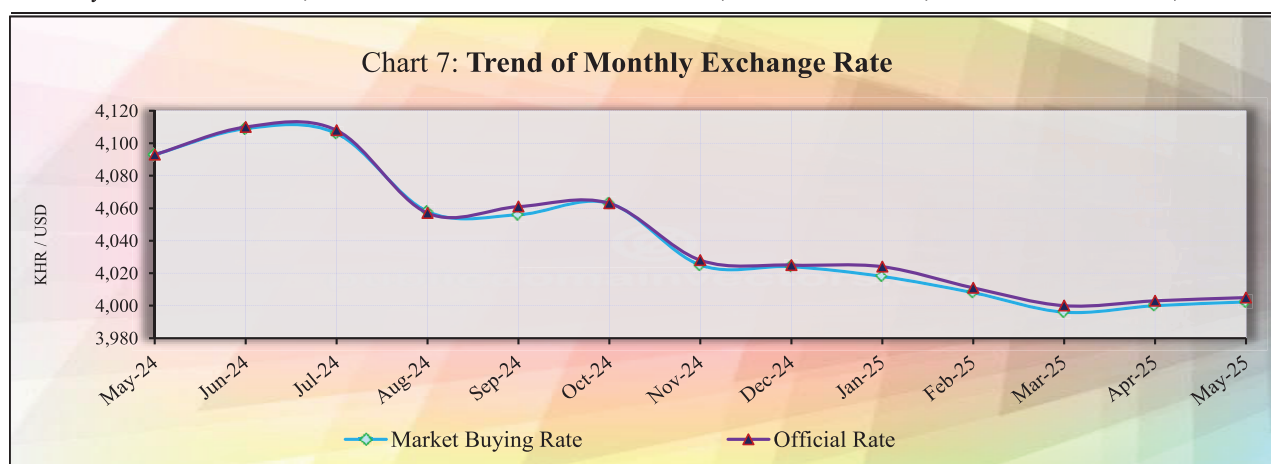


Table 9: The Value of KHR Against Other Currencies

(Official Buying Rate, End-Period)

Unit	SDR	US Dollar	Euro	Japanese Yen	British Pounds	Indonesian Rupiah	Malaysian Ringgit	Philippines Peso	Singapore Dollar	Thai Baht	Vietnamese Dong	China Yuan
	I	I	I	100	I	1000	I	100	I	I	1000	I
Dec-18	5,588	4,018	4,597	3,641	5,098	277	969	7,653	2,942	124	174	584
Dec-19	5,635	4,075	4,565	3,743	5,344	293	994	8,050	3,023	136	176	583
Dec-20	5,826	4,045	4,962	3,908	5,465	287	1,000	8,423	3,049	135	175	619
Dec-21	5,702	4,074	4,614	3,541	5,499	286	977	7,992	3,015	122	179	639
Dec-22	5,479	4,117	4,378	3,079	4,956	263	931	7,392	3,053	119	174	591
2023												
Jul	5,571	4,130	4,527	2,956	5,291	274	907	7,526	3,098	121	174	577
Aug	5,513	4,158	4,518	2,840	5,253	273	895	7,330	3,071	118	172	570
Sep	5,405	4,122	4,336	2,759	5,015	266	876	7,235	3,006	112	169	565
Oct	5,418	4,135	4,363	2,764	5,002	260	868	7,261	3,023	115	168	565
Nov	5,487	4,115	4,523	2,793	5,226	267	885	7,431	3,091	118	170	578
Dec	5,481	4,085	4,541	2,899	5,231	265	887	7,363	3,102	120	168	575
2024												
Jan	5,427	4,083	4,419	2,769	5,181	259	864	7,239	3,048	116	167	569
Feb	5,406	4,069	4,401	2,699	5,142	260	854	7,240	3,022	113	165	565
Mar	5,354	4,041	4,361	2,670	5,094	255	854	7,190	2,994	111	163	559
Apr	5,354	4,064	4,349	2,610	5,085	250	852	7,047	2,987	110	160	561
May	5,417	4,093	4,425	2,606	5,199	252	870	6,981	3,028	111	161	565
June	5,402	4,110	4,391	2,559	5,191	251	871	6,996	3,028	111	161	565
July	5,447	4,108	4,448	2,654	5,282	252	890	7,008	3,057	114	162	567
Aug	5,470	4,057	4,497	2,804	5,350	263	938	7,208	3,115	119	163	571
Sep	5,497	4,061	4,525	2,838	5,431	269	986	7,245	3,165	125	165	579
Oct	5,395	4,063	4,395	2,651	5,285	258	927	6,973	3,068	121	160	570
Nov	5,292	4,028	4,243	2,654	5,096	254	906	6,866	2,997	117	159	555
Dec	5,249	4,025	4,192	2,549	5,058	250	900	6,959	2,964	118	158	551
2025												
Jan	5,252	4,024	4,194	2,603	5,009	248	916	6,904	2,981	119	161	556
Feb	5,270	4,011	4,200	2,681	5,081	244	903	6,929	2,990	118	157	552
Mar	5,306	4,000	4,311	2,659	5,177	242	903	6,935	2,983	118	156	551
Apr	5,422	4,003	4,561	2,811	5,373	239	927	7,130	3,061	120	154	551
May	5,434	4,005	4,512	2,756	5,390	246	946	7,186	3,103	122	154	557
Monthly % Change	0.22	0.05	-1.07	-1.96	0.32	2.93	2.05	0.79	1.37	1.67	0.00	1.09

Table 10: Deposit Money Bank's Interest Rates on Deposits and Loans in KHR and USD

	Dec-19	Dec-20	Dec-21	Dec-22	Dec-23	Jan-24	Feb-24	Mar-24	Apr-24	May-24	Jun-24	Jul-24	Aug-24	Sep-24	Oct-24	Nov-24	Dec-24	Jan-25	Feb-25	Mar-25	Apr-25	May-25	
<i>Weighted Average Rate on New Amount</i>																							
Interest Rate on Deposits and Loans in KHR																							
Deposit																							
Demand Deposits	0.12	0.03	0.35	0.29	0.19	0.18	0.16	0.28	0.17	0.25	0.37	0.37	0.33	0.30	0.17	0.31	0.29	0.22	0.21	0.20	0.20	0.09	0.26
Saving Deposits	0.60	0.60	1.05	0.85	0.83	0.92	0.83	0.80	0.81	0.81	0.88	0.87	0.87	0.86	0.85	0.81	0.77	0.78	0.44	0.44	0.45	0.45	0.42
Term Deposits	4.10	5.34	4.79	6.12	6.54	6.69	6.09	5.76	5.93	6.13	5.85	5.74	5.76	5.30	5.26	5.00	5.06	4.68	5.14	5.20	5.11	5.09	
Other Deposits	2.47	3.49	2.20	7.16	7.09	7.10	7.18	6.96	7.22	6.91	6.28	6.65	6.57	6.30	6.45	6.10	5.84	6.09	6.14	6.26	5.81	6.09	
Loans																							
Overdraft	7.72	7.14	6.32	7.38	7.61	8.90	8.71	8.86	9.13	7.13	9.98	11.35	11.13	11.07	10.26	10.61	9.07	10.20	10.75	9.47	10.02	9.36	
Credit Card	16.73	14.21	13.84	15.66	16.20	14.52	12.80	12.05	12.70	9.85	13.07	13.41	12.71	12.85	12.85	12.17	13.58	15.23	12.00	15.17	12.09	10.36	
Term Loans	9.13	10.15	10.18	10.88	11.40	12.45	12.67	12.32	12.45	12.58	11.56	12.36	12.52	11.92	11.45	11.96	11.32	12.25	12.07	12.00	11.88	11.63	
Other Loans	5.59	6.47	7.00	5.24	4.93	6.63	6.94	6.93	6.28	6.19	7.32	8.00	7.43	7.74	7.83	7.44	5.88	7.45	8.18	7.47	7.93	7.17	
Interest Rate on Deposits and Loans in USD																							
Deposit																							
Demand Deposits	0.20	0.10	0.18	0.32	0.26	0.37	0.35	0.65	0.35	0.43	0.48	0.48	0.49	0.47	0.33	0.45	0.44	0.40	0.41	0.45	0.28	0.43	
Saving Deposits	0.24	0.17	0.21	0.30	0.42	0.35	0.36	0.36	0.35	0.35	0.27	0.27	0.27	0.27	0.27	0.25	0.22	0.21	0.22	0.20	0.20	0.19	
Term Deposits	3.44	3.24	3.98	5.59	6.08	5.83	5.86	5.67	5.70	5.34	5.22	5.02	5.15	4.60	4.62	4.50	4.65	4.55	4.73	4.65	4.59	4.63	
Other Deposits	2.47	0.80	3.93	6.57	6.20	6.88	7.48	7.42	7.04	7.05	6.95	6.83	5.88	7.35	7.68	5.99	7.16	7.28	6.28	6.66	5.65	5.93	
Loans																							
Overdraft	7.57	6.15	5.97	7.68	8.13	8.30	8.47	8.04	7.71	6.55	8.13	7.97	8.55	8.54	7.14	8.24	8.29	8.22	8.43	8.27	7.77	7.70	
Credit Card	11.97	17.02	17.27	17.45	18.25	17.05	16.90	17.33	17.31	16.67	16.91	16.59	16.16	16.42	16.31	16.29	17.02	16.53	16.62	16.86	16.44	16.26	
Term Loans	8.72	9.11	9.09	9.10	9.78	10.34	10.35	10.05	10.33	10.96	10.06	10.72	10.82	10.05	10.90	9.62	9.39	10.51	10.68	10.14	10.20	10.35	
Other Loans	6.50	6.01	5.93	6.67	7.23	7.55	7.66	7.68	7.64	7.58	7.69	7.44	7.53	7.50	7.06	7.16	6.86	6.86	7.09	7.01	6.70	6.94	
<i>Weighted Average Rate on Outstanding Amount</i>																							
Interest Rate on Deposits and Loans in KHR																							
Deposit																							
Demand Deposits	0.22	0.19	0.47	0.54	0.57	0.54	0.59	0.43	0.48	0.53	0.49	0.55	0.58	0.52	0.58	0.48	0.50	0.42	0.48	0.39	0.43	0.55	
Saving Deposits	0.91	0.82	1.02	1.12	1.24	1.25	1.15	1.15	1.18	1.21	1.26	1.30	1.20	1.15	1.16	1.13	1.10	1.14	0.99	0.98	0.98	0.99	
Term Deposits	5.42	5.66	5.85	6.63	7.34	7.35	7.32	7.30	7.28	7.21	7.20	7.08	6.93	6.78	6.78	6.74	6.67	6.58	6.50	6.42	6.35	6.28	
Other Deposits	2.81	3.20	2.20	2.23	2.67	6.38	6.90	6.72	6.65	6.78	6.44	6.44	6.84	6.85	6.79	6.83	6.72	6.28	6.20	6.21	5.51	5.35	
Loans																							
Overdraft	8.08	7.93	8.26	8.48	8.14	8.14	8.15	8.13	8.08	8.12	8.27	8.41	8.73	8.91	9.12	9.28	9.21	9.33	9.44	9.40	9.43	9.51	
Credit Card	17.29	16.25	15.30	14.26	13.85	13.80	13.78	13.71	13.63	13.42	13.39	13.47	13.17	13.30	13.08	13.08	13.06	12.98	12.98	13.04	12.90	12.85	
Term Loans	10.62	10.54	10.52	10.62	11.32	11.36	11.36	11.33	11.38	11.39	11.39	11.42	11.45	11.45	11.42	11.42	11.40	11.37	11.38	11.36	11.34	11.40	
Other Loans	6.28	6.73	6.67	6.46	6.06	6.33	6.30	6.34	6.31	6.31	6.25	6.30	6.40	6.49	6.55	6.55	6.40	6.51	6.50	6.48	6.49	6.48	
Interest Rate on Deposits and Loans in USD																							
Deposit																							
Demand Deposits	0.35	0.41	0.40	0.60	0.88	0.89	0.96	1.00	0.99	1.04	1.03	1.07	1.12	1.09	1.17	1.13	1.10	1.19	1.20	1.21	1.12	1.17	
Saving Deposits	0.43	0.41	0.47	0.65	0.78	0.80	0.73	0.75	0.76	0.81	0.84	0.84	0.79	0.79	0.78	0.77	0.75	0.76	0.74	0.75	0.76	0.76	
Term Deposits	4.34	4.40	4.53	5.26	6.38	6.40	6.41	6.40	6.40	6.34	6.32	6.25	6.19	6.10	6.01	5.93	5.83	5.72	5.62	5.53	5.46	5.37	
Other Deposits	2.43	0.94	3.28	2.76	3.90	4.72	4.59	4.83	4.94	5.00	3.80	4.26	4.90	4.92	5.03	5.12	5.17	4.19	4.87	4.23	4.56	4.73	
Loans																							
Overdraft	7.82	7.71	7.47	7.38	7.71	7.68	7.71	7.72	7.71	7.62	7.66	7.64	7.65	7.68	7.67	7.67	7.65	7.64	7.64	7.66	7.65	7.65	
Credit Card	15.53	17.11	16.62	16.13	16.06	16.07	15.99	15.85	16.01	15.88	16.09	15.97	15.92	15.81	15.94	15.89	15.86	15.87	15.85	15.86	15.90	15.83	
Term Loans	9.51	9.36	9.18	9.22	9.75	9.75	9.76	9.76	9.77	9.91	9.89	10.01	9.93	9.92	9.93	9.88	9.87	9.88	9.89	9.83	9.84	9.83	
Other Loans	7.19	6.93	6.83	6.86	7.47	7.46	7.45	8.27	7.49	7.43	7.56	7.54	7.56	7.56	7.52	7.50	7.53	7.48	7.48	7.48	7.44	7.43	

*Including Commercial Banks and Specialized Banks
Revised Data

Table 11: Central Bank Survey*

(In Billion KHR)

	Jan-25	Feb-25	Mar-25	Apr-25	May-25
Net Foreign Assets	90,688.0	90,963.4	94,205.7	97,766.3	98,134.1
Claims on Nonresidents	92,019.3	92,297.8	95,549.2	99,139.3	99,510.0
Liabilities to Nonresidents	-1,331.3	-1,334.5	-1,343.6	-1,373.0	-1,375.9
Claims on Other Depository Corporations	863.8	1,091.9	1,195.2	1,226.6	1,098.5
Net Claims on Central Government	-11,448.1	-10,831.0	-11,667.0	-11,760.6	-12,551.1
Claims on Central Government	0.0	0.0	0.0	0.0	0.0
Liabilities to Central Government	-11,448.1	-10,831.0	-11,667.0	-11,760.6	-12,551.1
Claims on Other Sectors	86.3	53.4	71.5	262.4	289.1
Claims on Other Financial Corporations	0.0	0.0	0.0	0.0	0.0
Claims on State and Local Government	0.0	0.0	0.0	0.0	0.0
Claims on Public Nonfinancial Corporations	0.0	0.0	0.0	0.0	0.0
Claims on Private Sector	86.3	53.4	71.5	262.4	289.1
Monetary Base	62,685.1	61,224.2	62,571.4	63,148.5	63,790.5
Currency in Circulation	17,382.6	17,575.5	18,603.4	19,339.5	18,376.3
Liabilities to Other Depository Corporations	45,277.3	43,608.3	43,945.0	43,783.6	45,390.7
Liabilities to Other Sectors	25.1	40.4	22.9	25.4	23.5
Other Liabilities to Other Depository Corporations	11,105.0	12,488.6	12,229.1	12,759.6	12,556.4
Deposits And Securities Other Than Shares Excl. Form Monetary Base	47.4	48.0	48.2	51.7	51.7
Deposits Included in Broad Money	0.0	0.0	0.0	0.0	0.0
Securities Other Than Shares Incl. in Broad Money	0.0	0.0	0.0	0.0	0.0
Deposits Excl. From Broad Money	47.4	48.0	48.2	51.7	51.7
Securities Other Than Shares Excl. From Broad Money	0.0	0.0	0.0	0.0	0.0
Loans	0.0	0.0	0.0	0.0	0.0
Financial Derivatives	0.0	0.0	0.0	0.0	0.0
Shares and Other Equity	9,240.7	10,376.9	11,775.0	14,326.9	13,355.1
Other Items (Net)	-2,888.2	-2,860.3	-2,818.3	-2,792.0	-2,783.1
<i>IFS Vertical Check</i>	<i>0.0</i>	<i>0.0</i>	<i>0.0</i>	<i>0.0</i>	<i>0.0</i>

* Included only central bank

** Revised Data

Table 12: Other Depository Corporations Survey*

(In Billion KHR)

	Jan-25	Feb-25	Mar-25	Apr-25	May-25
Net Foreign Assets	6,465.5	9,981.8	12,528.9	13,832.4	15,816.2
Claims on Nonresidents	39,040.0	40,695.2	42,199.2	42,578.8	43,519.1
Liabilities to Nonresidents	-32,574.5	-30,713.4	-29,670.3	-28,746.4	-27,702.9
Claims On Central Bank	59,457.0	59,300.6	59,689.9	59,914.0	60,027.6
Currency	2,316.8	2,385.5	2,482.8	2,617.9	2,399.4
Reserve Deposits and Securities Other Than Shares	57,078.2	56,856.8	57,153.7	57,247.2	57,584.7
Other Claims on Central Bank	61.9	58.3	53.4	48.9	43.5
Net Claims on Central Government	-12,272.0	-12,520.9	-12,535.6	-12,622.7	-12,811.8
Claims on Central Government	513.7	462.7	540.2	563.1	559.6
Liabilities to Central Government	-12,785.8	-12,983.5	-13,075.9	-13,185.8	-13,371.4
Claims on Other Sectors	237,370.0	237,296.6	238,069.8	238,392.8	235,360.8
Claims on Other Financial Corporations	2,520.9	2,582.2	2,505.2	2,527.6	2,493.6
Claims on State and Local Government	0.0	0.0	0.0	0.0	0.0
Claims on Public Nonfinancial Corporations	1.3	1.6	17.6	27.6	29.7
Claims on Private Sector	234,847.8	234,712.9	235,547.1	235,837.6	232,837.5
Liabilities to Central Bank	36.2	32.2	24.3	36.4	26.3
Transferable Deposits Incl. in Broad Money	35,155.7	36,313.5	37,755.9	37,354.0	38,019.4
Other Deposits Incl. in Broad Money	180,109.4	181,675.2	183,830.2	186,119.1	185,684.5
Securities Other Than Shares Incl. in Broad Money	0.0	0.0	0.0	0.0	0.0
Deposits Excl. From Broad Money	222.2	305.2	248.0	262.8	443.3
Securities Other Than Shares Excl. From Broad Money	0.0	0.0	0.0	0.0	0.0
Loans	2,341.7	1,969.4	2,040.7	1,976.5	1,812.0
Financial Derivatives	0.0	0.0	0.0	0.0	0.0
Shares and Other Equity	63,084.8	63,471.8	63,447.9	64,301.4	63,050.3
Other Items (Net)	10,070.4	10,291.0	10,405.9	9,466.3	9,357.0
<i>IFS Vertical Check</i>	<i>0.0</i>	<i>0.0</i>	<i>0.0</i>	<i>0.0</i>	<i>0.0</i>

* Included commercial banks and MDIs

** Revised Data

Table 13: Depository Corporations Survey*

(In Billion KHR)

	Jan-25	Feb-25	Mar-25	Apr-25	May-25
Net Foreign Assets	97,153.5	100,945.2	106,734.6	111,598.7	113,950.2
Claims on Nonresidents	131,059.3	132,993.1	137,748.4	141,718.1	143,029.0
Liabilities to Nonresidents	-33,905.8	-32,047.9	-31,013.8	-30,119.4	-29,078.8
Domestic Claims	213,736.2	213,998.1	213,938.7	214,271.9	210,286.9
Net Claims on Central Government	-23,720.1	-23,351.9	-24,202.7	-24,383.3	-25,362.9
Claims on Central Government	513.7	462.7	540.2	563.1	559.6
Liabilities to Central Government	-24,233.8	-23,814.6	-24,742.9	-24,946.4	-25,922.5
Claims on Other Sectors	237,456.3	237,350.0	238,141.4	238,655.2	235,649.8
Claims on Other Financial Corporations	2,520.9	2,582.2	2,505.2	2,527.6	2,493.6
Claims on State and Local Government	0.0	0.0	0.0	0.0	0.0
Claims on Public Nonfinancial Corporations	1.3	1.6	17.6	27.6	29.7
Claims on Private Sector	234,934.1	234,766.2	235,618.6	236,100.0	233,126.6
Broad Money Liabilities (M2)	230,356.0	233,219.1	237,729.7	240,220.0	239,704.3
Currency Outside Depository Corporations	15,065.8	15,190.0	16,120.6	16,721.6	15,977.0
Transferable Deposits	35,163.0	36,336.1	37,761.0	37,361.5	38,025.1
Other Deposits	180,127.3	181,693.0	183,848.1	186,136.9	185,702.3
Securities Other Than Shares	0.0	0.0	0.0	0.0	0.0
<i>of which Foreign Currency (of M2)</i>	<i>195,779.7</i>	<i>198,445.3</i>	<i>202,819.3</i>	<i>204,493.1</i>	<i>204,810.1</i>
Deposits Excl. From Broad Money	269.6	353.2	296.2	314.5	495.0
Securities Other Than Shares Excl. From Broad Money	0.0	0.0	0.0	0.0	0.0
Loans	2,341.7	1,969.4	2,040.7	1,976.5	1,812.0
Financial Derivative	0.0	0.0	0.0	0.0	0.0
Insurance Technical Reserves	0.0	0.0	0.0	0.0	0.0
Shares and Other Equity	72,325.5	73,848.7	75,222.8	78,628.3	76,405.3
Other Items (Net)	5,596.8	5,552.9	5,383.8	4,731.3	5,820.4
<i>IFS Vertical Check</i>	<i>0.0</i>	<i>0.0</i>	<i>0.0</i>	<i>0.0</i>	<i>0.0</i>

* Included data of central bank and other depository corporations(ODCs)

** Revised Data

Table 14: Other Financial Corporations Survey*

(In Billion KHR)

	Jan-25	Feb-25	Mar-25	Apr-25	May-25
Net Foreign Assets	-942.3	-937.5	-858.0	-870.2	-845.8
Claims on Nonresidents	503.3	505.5	510.2	538.9	559.4
Liabilities to Nonresidents	-1,445.6	-1,443.1	-1,368.2	-1,409.1	-1,405.2
Claims on Depository Corporations	5,235.0	5,233.3	5,103.7	5,090.9	5,090.6
Net Claims on Central Government	-6.4	-5.6	-1.4	-1.7	-2.6
Claims on Central Government	10.0	10.2	8.7	8.8	9.0
Liabilities to Central Government	-16.4	-15.7	-10.1	-10.5	-11.5
Claims on Other Sectors	9,786.2	9,815.1	10,116.9	10,219.7	10,293.7
Claims on State and Local Government	0.0	0.0	0.0	0.0	0.0
Claims on Public Nonfinancial Corporations	3.5	3.5	79.3	79.3	79.3
Claims on Private Sector	9,782.7	9,811.6	10,037.7	10,140.4	10,214.5
Deposit	1.1	1.1	0.9	0.9	1.1
Securities Other Than Shares	0.0	0.0	0.1	0.1	0.1
Loans	5,303.0	5,280.8	5,282.2	5,327.3	5,375.5
Financial Derivatives	0.0	0.0	0.0	0.0	0.0
Insurance Technical Reserves	2,463.42	2,463.42	2,615.17	2,615.17	2,615.17
Shares and Other Equity	5,486.6	5,514.6	5,548.6	5,526.0	5,553.7
Other Items (Net)	818.3	845.3	914.2	969.1	990.4
<i>IFS Vertical Check</i>	<i>0.0</i>	<i>0.0</i>	<i>0.0</i>	<i>0.0</i>	<i>0.0</i>

* Included only specialized banks from Dec-2013 to Dec-2020.
From Jan-2021 to present, OFCs included Specialized Banks,
MFIs and Insurance Companies.

** Revised Data

Table 15: Financial Corporations Survey*

(In Billion KHR)

	Jan-25	Feb-25	Mar-25	Apr-25	May-25
Net Foreign Assets	96,211.2	100,007.7	105,876.5	110,728.5	113,104.5
Claims on Nonresidents	131,562.6	133,498.6	138,258.6	142,257.0	143,588.4
Liabilities to Nonresidents	-35,351.4	-33,491.0	-32,382.0	-31,528.5	-30,484.0
Domestic Claims	220,995.0	221,225.5	221,549.0	221,962.2	218,084.5
Net Claims on Central Government	-23,726.5	-23,357.5	-24,204.1	-24,385.0	-25,365.5
Claims on Central Government	523.7	472.8	548.9	571.9	568.5
Liabilities to Central Government	-24,250.3	-23,830.3	-24,753.0	-24,956.9	-25,934.0
Claims on Other Sectors	244,721.6	244,582.9	245,753.1	246,347.2	243,450.0
Claims on State and Local Government	0.0	0.0	0.0	0.0	0.0
Claims on Public Nonfinancial Corporations	4.8	5.1	96.8	106.9	108.9
Claims on Private Sector	244,716.8	244,577.8	245,656.3	246,240.4	243,341.0
Currency Outside Financial Corporations	15,053.8	15,178.0	16,107.7	16,708.8	15,963.6
Deposits	212,041.4	214,889.7	218,442.7	220,195.3	220,657.1
Securities Other Than Shares	0.0	0.0	0.0	0.0	0.0
Loans	7,331.4	6,895.4	7,001.0	6,954.1	6,905.0
Financial Derivatives	0.0	0.0	0.0	0.0	0.0
Insurance Technical Reserves	2,463.4	2,463.4	2,615.2	2,615.2	2,615.2
Shares and Other Equity	77,812.1	79,363.4	80,771.4	84,154.3	81,959.1
Other Items (Net)	2,504.1	2,443.2	2,487.6	2,063.0	3,089.0
<i>IFS Vertical Check</i>	<i>0.0</i>	<i>0.0</i>	<i>0.0</i>	<i>0.0</i>	<i>0.0</i>

* Included data of depository corporations and other financial corporations

** Revised Data

Chart 8: Financial Corporations Survey

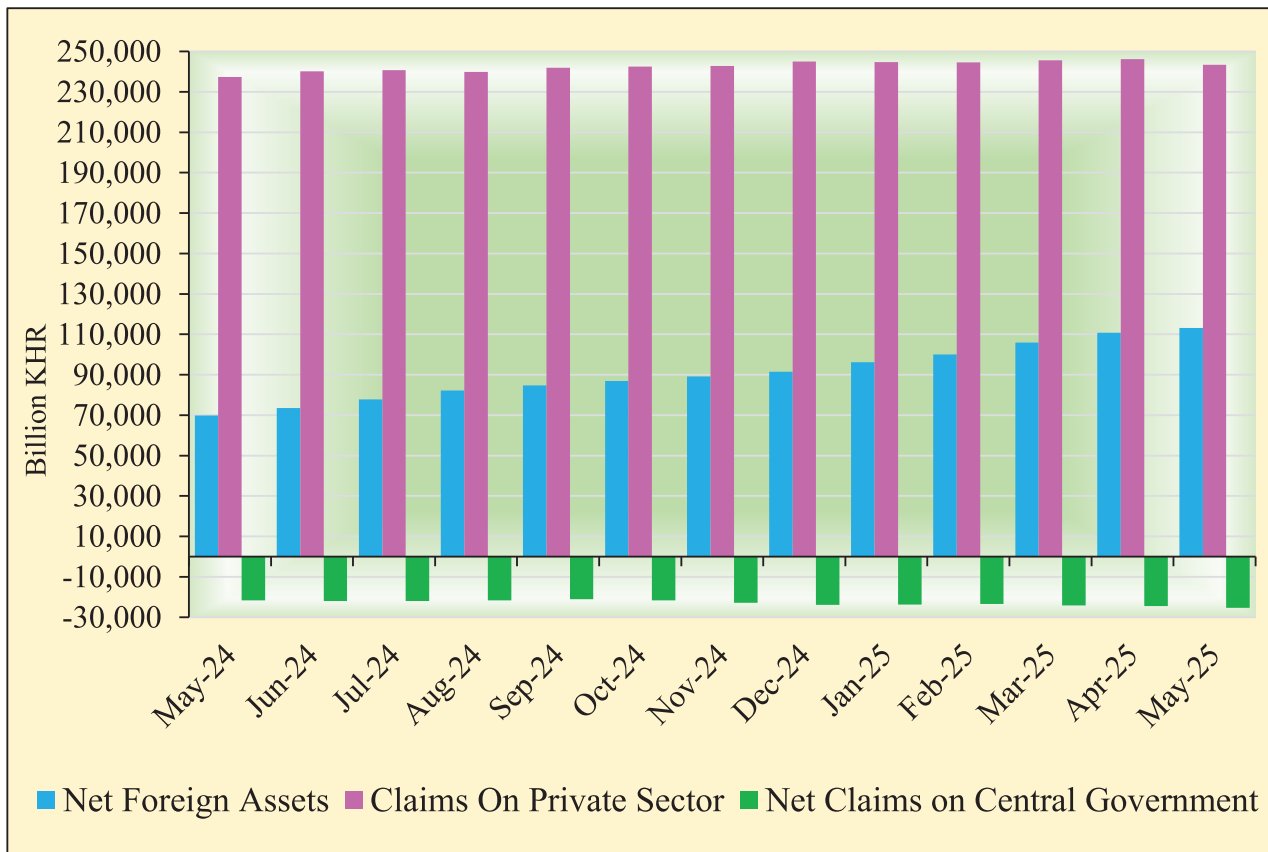


Chart 9: Monetary Aggregates Components

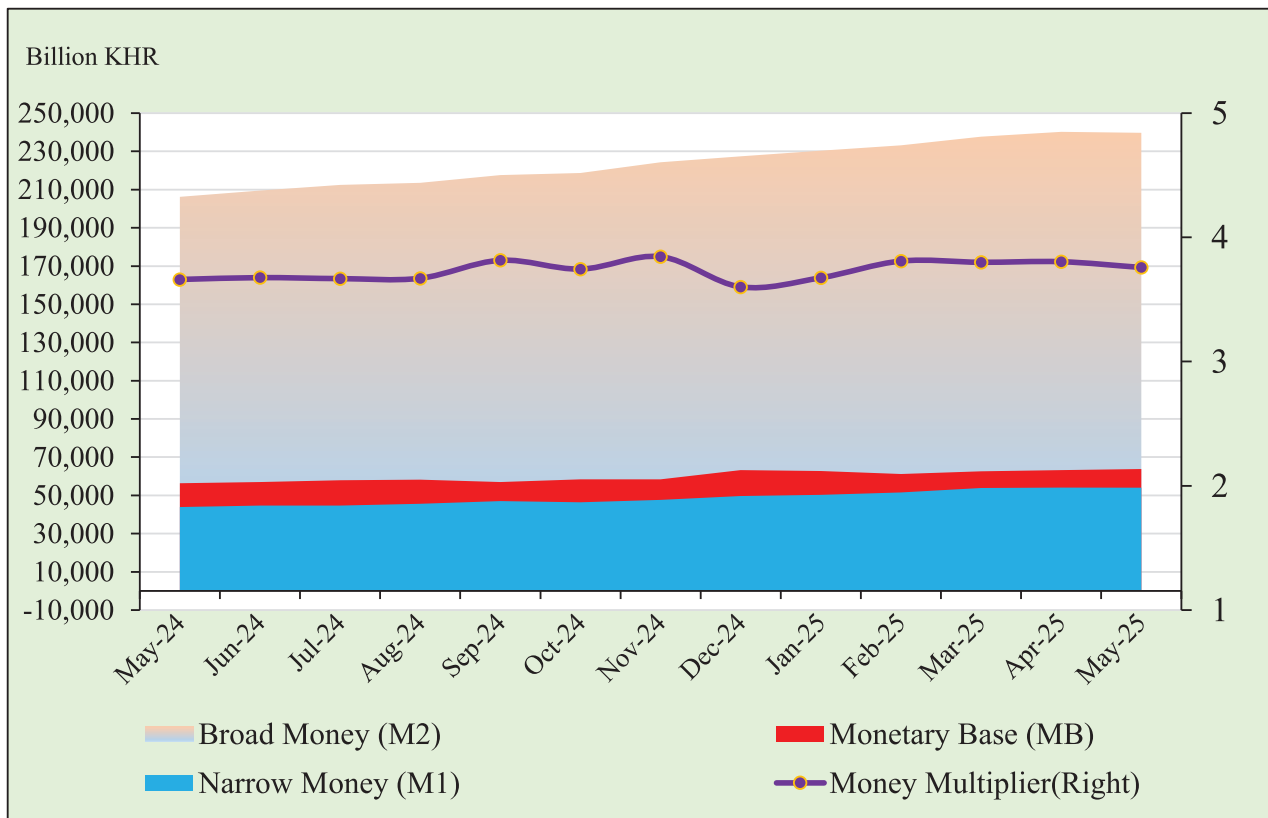


Table 16: Credit Granted by Depository Institutions Classified by Industry

(In Billion KHR)

	Jan-25	Feb-25	Mar-25	Apr-25	May-25
1 Agriculture, Forestry and Fishing	23,523.1	23,497.4	23,145.6	23,160.9	22,942.3
2 Mining and Quarrying	1,319.9	1,325.2	1,372.1	1,396.3	1,419.0
3 Manufacturing	10,156.8	10,117.6	10,052.4	10,008.2	9,932.2
Of which Textile, Wearing Apparel and Leather Products Manufacturing	1,116.9	1,123.5	1,121.6	1,121.0	1,121.5
4 Utilities	3,104.7	3,222.6	3,379.4	3,469.5	3,551.2
5 Construction	22,697.1	22,708.9	22,245.4	22,242.1	22,322.7
6 Wholesale Trade	20,151.4	19,841.3	20,153.4	20,307.6	20,249.5
7 Retail Trade	39,989.5	39,849.0	39,873.9	39,831.0	39,766.6
8 Accommodation and Food Service Activities	9,412.1	9,411.9	9,819.6	9,804.1	9,838.7
9 Arts, entertainment and recreation	326.7	328.5	328.0	323.6	329.8
10 Financial and Insurance Activities	7,085.0	7,101.9	6,726.0	6,571.9	6,276.8
11 Transport and Storage	6,611.2	6,727.7	6,835.1	6,817.7	6,833.1
12 Information and Communications	959.1	955.2	950.1	925.3	922.5
13 Rental and Operational Leasing Activities, excluded Real Estate Leasing and Rentals	3,166.2	3,115.7	2,869.5	2,871.5	2,860.4
14 Real Estate Activities	52,411.3	51,785.4	52,257.9	52,192.4	53,154.3
Of which Mortgages, Owner-Occupied Housing only	25,675.8	25,401.5	25,127.5	24,996.8	24,883.3
15 Education	865.6	812.1	817.9	818.0	857.1
16 Human health and social work activities	1,493.3	1,478.5	1,472.3	1,452.7	1,468.6
17 Activities of households as employers; undifferentiated goods- and services-producing activities of households for own use	23,932.5	24,050.1	24,366.8	24,351.3	24,496.4
Of which Personal Lending	21,577.1	21,662.2	22,344.4	22,298.1	22,428.2
Of which Credit Cards	961.8	984.5	1,013.3	1,022.0	1,034.4
18 Other Lending	11,431.4	12,074.1	12,019.8	12,305.7	12,283.1
Total Gross Loan	238,636.8	238,403.3	238,685.2	238,850.0	239,504.8

Including Commercial banks and MDIs

*Revised

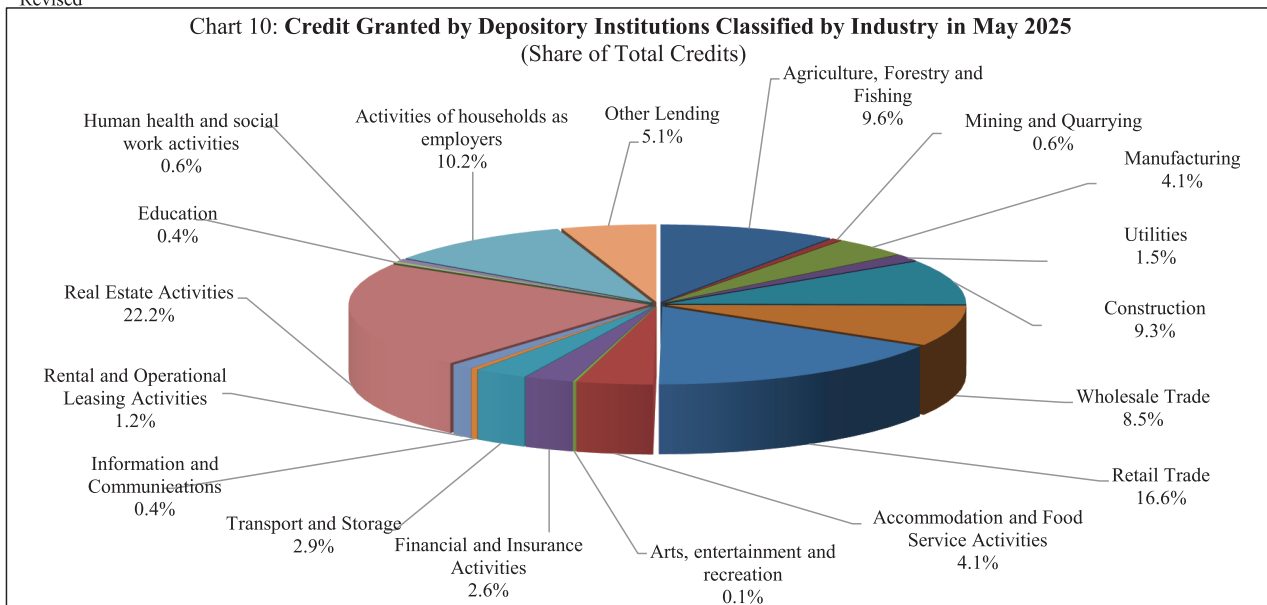


Table 17: Credit Granted by Non-Depository Institutions Classified by Industry

(In Billion KHR)

	Jan-25	Feb-25	Mar-25	Apr-25	May-25
1 Agriculture, Forestry and Fishing	23.7	26.5	26.5	27.5	22.9
2 Mining and Quarrying	0.0	0.0	0.0	0.0	0.0
3 Manufacturing	46.3	47.2	47.1	47.7	47.3
Of which Textile, Wearing Apparel and Leather Products Manufacturing	2.2	2.2	2.2	2.2	2.0
4 Utilities	1.1	1.0	1.0	1.0	1.0
5 Construction	30.2	33.8	34.3	34.3	34.5
6 Wholesale Trade	44.6	52.0	52.6	54.5	45.3
7 Retail Trade	71.6	75.5	75.4	74.6	74.7
8 Accommodation and Food Service Activities	35.9	37.8	38.3	46.6	46.4
9 Arts, entertainment and recreation	0.0	0.0	0.0	0.0	0.0
10 Financial and Insurance Activities	155.3	139.5	127.5	121.1	117.1
11 Transport and Storage	9.8	13.8	13.7	13.8	13.7
12 Information and Communications	0.0	0.0	0.0	0.0	0.0
13 Rental and Operational Leasing Activities, excluded Real Estate Leasing and Rentals	33.3	44.8	45.3	45.5	45.4
14 Real Estate Activities	295.2	288.8	286.0	283.7	288.0
Of which Mortgages, Owner-Occupied Housing only	290.7	276.5	274.2	272.3	276.6
15 Education	0.0	0.0	0.0	0.0	0.0
16 Human health and social work activities	0.0	0.0	0.0	0.0	0.0
17 Activities of households as employers; undifferentiated goods- and services-producing activities of households for own use	1,647.5	1,612.6	1,625.2	1,629.3	1,632.9
Of which Personal Lending	1,376.2	1,340.7	1,351.5	1,354.2	1,354.2
Of which Credit Cards	120.7	124.5	128.3	132.4	134.8
18 Other Lending	3.2	3.2	3.1	3.1	3.1
Total Gross Loan	2,397.9	2,376.6	2,376.0	2,382.7	2,376.9

Including Specialized Banks

*Revised

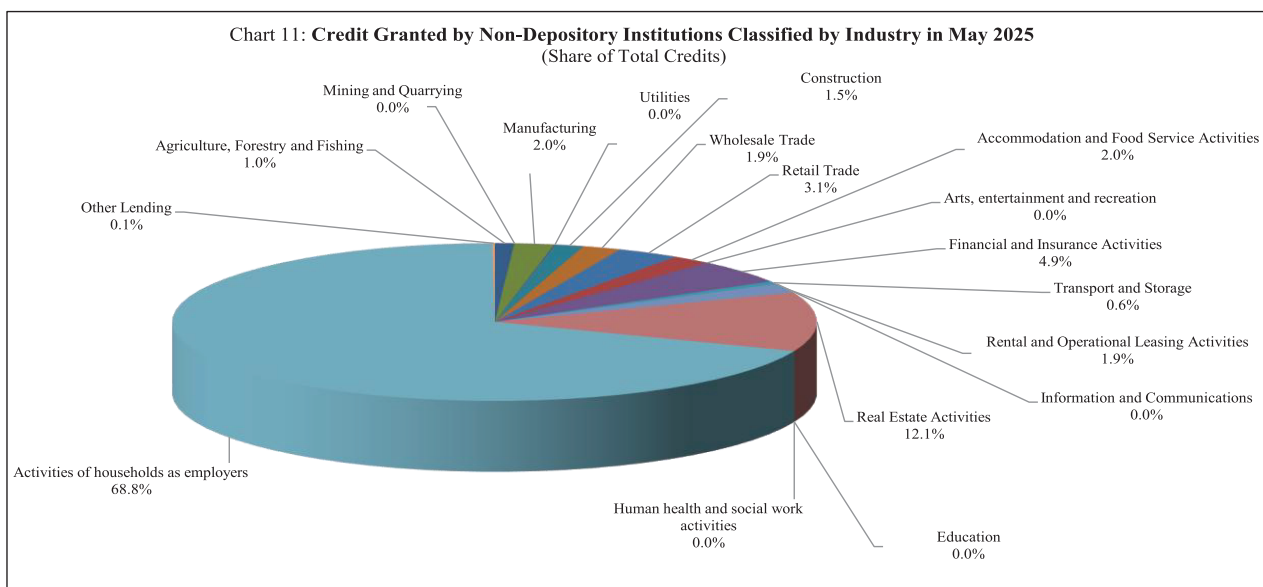


Table 18: Monthly Change of Credit Granted by Depository Institutions Classified by Industry

	Jan-25	Feb-25	Mar-25	Apr-25	May-25
(Monthly Change in Billion KHR)					
1 Agriculture, Forestry and Fishing	54.5	-25.6	-351.8	15.3	-218.6
2 Mining and Quarrying	21.3	5.3	46.9	24.2	22.7
3 Manufacturing	118.9	-39.2	-65.2	-44.1	-76.0
Of which Textile, Wearing Apparel and Leather Products Manufacturing	-58.2	6.6	-1.9	-0.6	0.5
4 Utilities	-14.1	117.9	156.8	90.1	81.7
5 Construction	0.8	11.9	-463.5	-3.3	80.6
6 Wholesale Trade	-160.5	-310.1	312.1	154.2	-58.1
7 Retail Trade	-111.9	-140.5	24.9	-42.9	-64.3
8 Accommodation and Food Service Activities	25.3	-0.2	407.7	-15.6	34.6
9 Arts, entertainment and recreation	12.4	1.8	-0.5	-4.4	6.3
10 Financial and Insurance Activities	-140.6	16.9	-375.9	-154.1	-295.1
11 Transport and Storage	-60.1	116.5	107.4	-17.4	15.4
12 Information and Communications	-11.1	-3.9	-5.1	-24.8	-2.8
13 Rental and Operational Leasing Activities, excluded Real Estate Leasing and Rentals	-20.0	-50.5	-246.3	2.0	-11.0
14 Real Estate Activities	-235.1	-625.9	472.5	-65.5	961.9
Of which Mortgages, Owner-Occupied Housing only	-198.0	-274.3	-274.0	-130.7	-113.5
15 Education	19.6	-53.5	5.8	0.1	39.1
16 Human health and social work activities	-64.1	-14.9	-6.2	-19.5	15.9
17 Activities of households as employers; undifferentiated goods- and services-producing activities of households for own use	317.6	117.7	316.6	-15.4	145.0
Of which Personal Lending	-105.2	85.1	682.3	-46.3	130.1
Of which Credit Cards	15.6	22.7	28.8	8.6	12.4
18 Other Lending	-109.3	642.7	-54.3	286.0	-22.6
Total Gross Loan	-356.3	-233.6	282.0	164.8	654.7
(Monthly Percentage Change)					
1 Agriculture, Forestry and Fishing	0.2	-0.1	-1.5	0.1	-0.9
2 Mining and Quarrying	1.6	0.4	3.5	1.8	1.6
3 Manufacturing	1.2	-0.4	-0.6	-0.4	-0.8
Of which Textile, Wearing Apparel and Leather Products Manufacturing	-5.0	0.6	-0.2	0.0	0.0
4 Utilities	-0.5	3.8	4.9	2.7	2.4
5 Construction	0.0	0.1	-2.0	0.0	0.4
6 Wholesale Trade	-0.8	-1.5	1.6	0.8	-0.3
7 Retail Trade	-0.3	-0.4	0.1	-0.1	-0.2
8 Accommodation and Food Service Activities	0.3	0.0	4.3	-0.2	0.4
9 Arts, entertainment and recreation	4.0	0.5	-0.2	-1.3	1.9
10 Financial and Insurance Activities	-1.9	0.2	-5.3	-2.3	-4.5
11 Transport and Storage	-0.9	1.8	1.6	-0.3	0.2
12 Information and Communications	-1.1	-0.4	-0.5	-2.6	-0.3
13 Rental and Operational Leasing Activities, excluded Real Estate Leasing and Rentals	-0.6	-1.6	-7.9	0.1	-0.4
14 Real Estate Activities	-0.4	-1.2	0.9	-0.1	1.8
Of which Mortgages, Owner-Occupied Housing only	-0.8	-1.1	-1.1	-0.5	-0.5
15 Education	2.3	-6.2	0.7	0.0	4.8
16 Human health and social work activities	-4.1	-1.0	-0.4	-1.3	1.1
17 Activities of households as employers; undifferentiated goods- and services-producing activities of households for own use	1.3	0.5	1.3	-0.1	0.6
Of which Personal Lending	-0.5	0.4	3.1	-0.2	0.6
Of which Credit Cards	1.6	2.4	2.9	0.9	1.2
18 Other Lending	-0.9	5.6	-0.4	2.4	-0.2
Total Gross Loan	-0.1	-0.1	0.1	0.1	0.3

Table 19: Monthly Change of Credit Granted by Non-Depository Institutions Classified by Industry

	Jan-25	Feb-25	Mar-25	Apr-25	May-25
(Monthly Change in Billion KHR)					
1 Agriculture, Forestry and Fishing	0.0	2.8	0.0	1.0	-4.6
2 Mining and Quarrying	0.0	0.0	0.0	0.0	0.0
3 Manufacturing	0.5	0.9	-0.1	0.5	-0.3
Of which Textile, Wearing Apparel and Leather Products Manufacturing	-0.1	0.0	-0.1	0.0	-0.2
4 Utilities	0.0	-0.1	0.0	0.0	0.0
5 Construction	1.0	3.6	0.5	0.0	0.2
6 Wholesale Trade	-9.5	7.4	0.6	1.9	-9.2
7 Retail Trade	0.1	3.9	-0.2	-0.8	0.0
8 Accommodation and Food Service Activities	-4.0	1.9	0.5	8.4	-0.2
9 Arts, entertainment and recreation	0.0	0.0	0.0	0.0	0.0
10 Financial and Insurance Activities	-27.6	-15.7	-12.0	-6.4	-4.1
11 Transport and Storage	0.4	4.0	0.0	0.0	0.0
12 Information and Communications	0.0	0.0	0.0	0.0	0.0
13 Rental and Operational Leasing Activities, excluded Real Estate Leasing and Rentals	29.3	11.5	0.4	0.3	-0.1
14 Real Estate Activities	-25.4	-6.3	-2.8	-2.3	4.4
Of which Mortgages, Owner-Occupied Housing only	-2.4	-14.2	-2.4	-1.9	4.3
15 Education	-2.4	0.0	0.0	0.0	0.0
16 Human health and social work activities	0.0	0.0	0.0	0.0	0.0
17 Activities of households as employers; undifferentiated goods- and services-producing activities of households for own use	-8.0	-34.9	12.6	4.1	3.6
Of which Personal Lending	-1.0	-35.5	10.8	2.8	0.0
Of which Credit Cards	-7.9	3.8	3.7	4.1	2.4
18 Other Lending	0.0	0.0	0.0	0.0	0.0
Total Gross Loan	-45.5	-21.2	-0.6	6.7	-5.8
(Monthly Percentage Change)					
1 Agriculture, Forestry and Fishing	0.1	11.8	-0.1	3.7	-16.6
2 Mining and Quarrying	0.0	0.0	0.0	0.0	1.0
3 Manufacturing	1.2	2.0	-0.2	1.1	-0.7
Of which Textile, Wearing Apparel and Leather Products Manu	-4.6	2.2	-2.7	-0.8	-8.8
4 Utilities	0.7	-10.0	0.2	-1.3	0.8
5 Construction	3.6	11.9	1.4	0.0	0.5
6 Wholesale Trade	-17.6	16.5	1.1	3.6	-16.8
7 Retail Trade	0.2	5.4	-0.2	-1.0	0.1
8 Accommodation and Food Service Activities	-10.0	5.3	1.3	21.8	-0.5
9 Arts, entertainment and recreation	0.0	0.0	0.0	0.0	1.0
10 Financial and Insurance Activities	-15.1	-10.1	-8.6	-5.0	-3.3
11 Transport and Storage	3.9	40.7	-0.3	0.1	-0.1
12 Information and Communications	0.0	0.0	0.0	0.0	1.0
13 Rental and Operational Leasing Activities, excluded Real Estate Leasing and Rentals	727.0	34.5	0.9	0.6	-0.3
14 Real Estate Activities	-7.9	-2.1	-1.0	-0.8	1.5
Of which Mortgages, Owner-Occupied Housing only	-0.8	-4.9	-0.9	-0.7	1.6
15 Education	0.0	0.0	0.0	0.0	0.0
16 Human health and social work activities	0.0	0.0	0.0	0.0	0.0
17 Activities of households as employers; undifferentiated goods- and services-producing activities of households for own use	-0.5	-2.1	0.8	0.3	0.2
Of which Personal Lending	-0.1	-2.6	0.8	0.2	0.0
Of which Credit Cards	-6.1	3.2	3.0	3.2	1.8
18 Other Lending	0.2	-0.7	-0.7	-0.3	-0.3
Total Gross Loan	-1.9	-0.9	0.0	0.3	-0.2

Table 20: Deposits with Banks

(In Billion KHR)

	Jan-25	Feb-25	Mar-25	Apr-25	May-25
Deposits in KHR					
Demand deposits	5,721.5	5,748.4	5,680.6	5,760.6	5,781.7
Savings deposits	5,510.2	5,569.1	5,524.3	5,650.1	5,912.2
Fixed deposits	15,111.7	15,330.7	15,174.4	15,120.2	15,267.0
Others	136.1	133.8	141.9	124.9	132.3
Total	26,479.5	26,782.0	26,521.2	26,655.7	27,093.3
Deposits in Foreign Currency*					
Demand deposits	33,792.3	34,578.4	36,688.0	35,603.6	36,657.3
Savings deposits	54,916.2	56,102.6	57,285.6	58,308.6	59,314.5
Fixed deposits	115,774.6	116,440.1	117,425.0	118,683.7	119,597.9
Others	1,050.3	1,211.0	1,246.6	1,464.5	1,399.3
Total	205,533.3	208,332.1	212,645.1	214,060.5	216,969.0
Grand Total	232,012.8	235,114.1	239,166.3	240,716.2	244,062.3

* Deposits in foreign currency include deposits of Cambodian residents and non-residents

** Included data of Commercial bank and MDIs

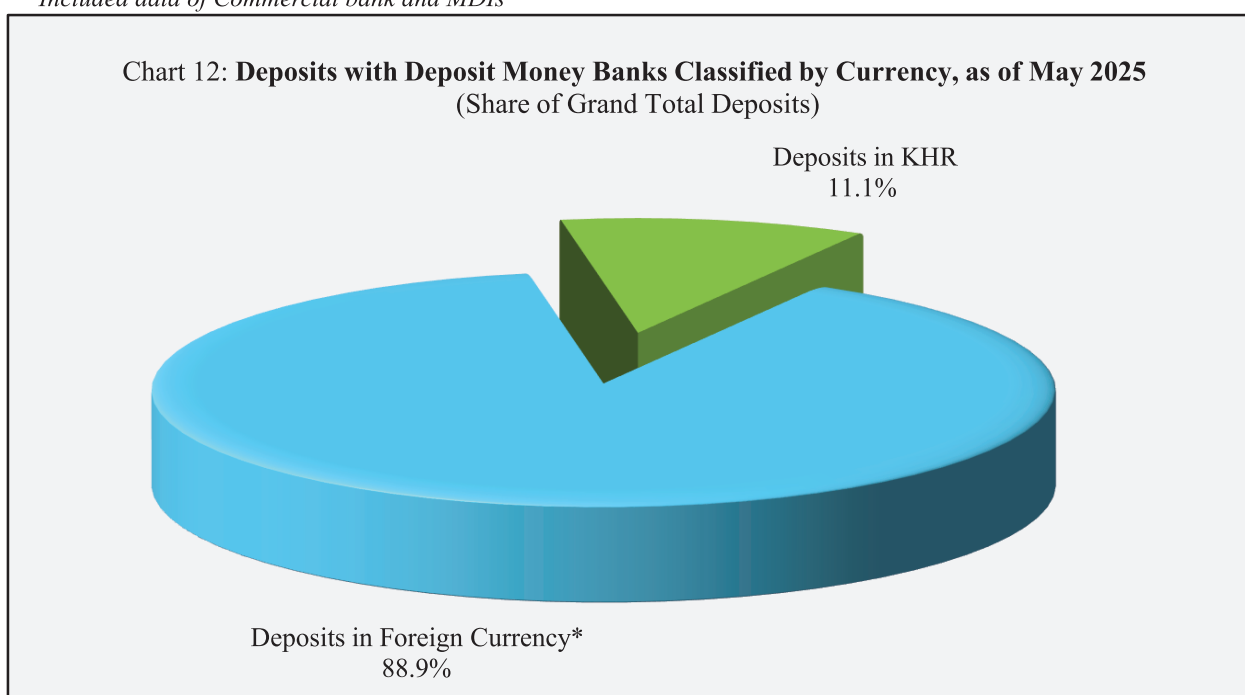


Table 21: Monthly Change of Deposits with Banks

	Jan-25	Feb-25	Mar-25	Apr-25	May-25
(Change in Billion KHR)					
Deposits in KHR					
Demand deposits	271.5	26.9	-67.8	80.0	21.1
Savings deposits	101.2	58.9	-44.8	125.8	262.2
Fixed deposits	-98.4	219.0	-156.3	-54.2	146.9
Others	-12.4	-2.2	8.1	-17.0	7.4
Total	261.9	302.5	-260.8	134.5	437.6
Deposits in Foreign Currency					
Demand deposits	267.0	786.1	2,109.6	-1,084.4	1,053.7
Savings deposits	1,576.2	1,186.4	1,183.0	1,023.0	1,005.9
Fixed deposits	728.4	665.5	984.9	1,258.8	914.1
Others	-30.9	160.8	35.6	217.9	-65.2
Total	2,540.7	2,798.8	4,313.1	1,415.3	2,908.5
Grand Total	2,802.6	3,101.3	4,052.3	1,549.9	3,346.1
(Percentage Change)					
Deposits in KHR					
Demand deposits	5.0	0.5	-1.2	1.4	0.4
Savings deposits	1.9	1.1	-0.8	2.3	4.6
Fixed deposits	-0.6	1.4	-1.0	-0.4	1.0
Others	-8.4	-1.7	6.0	-12.0	5.9
Total	1.0	1.1	-1.0	0.5	1.6
Deposits in Foreign Currency					
Demand deposits	0.8	2.3	6.1	-3.0	3.0
Savings deposits	3.0	2.2	2.1	1.8	1.7
Fixed deposits	0.6	0.6	0.8	1.1	0.8
Others	-2.9	15.3	2.9	17.5	-4.5
Total	1.3	1.4	2.1	0.7	1.4
Grand Total	1.2	1.3	1.7	0.6	1.4

Chart 13: Deposits in KHR Classified by Type, as of May 2025

(Share of Total KHR Deposits)

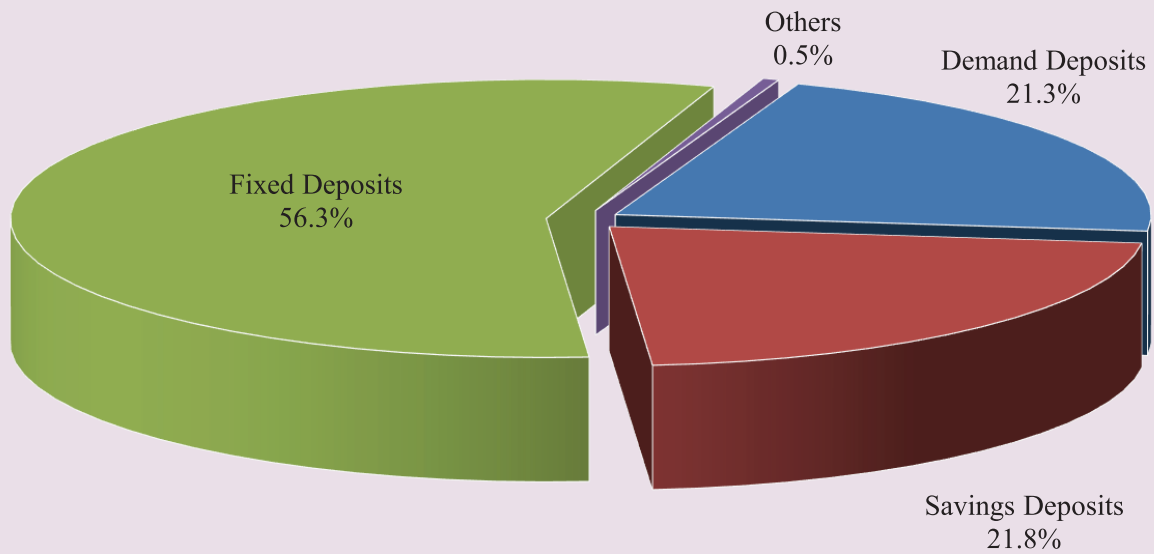


Chart 14: Deposits in Foreign Currency Classified by Type, as of May 2025

(Share of Total Foreign Currency Deposits)

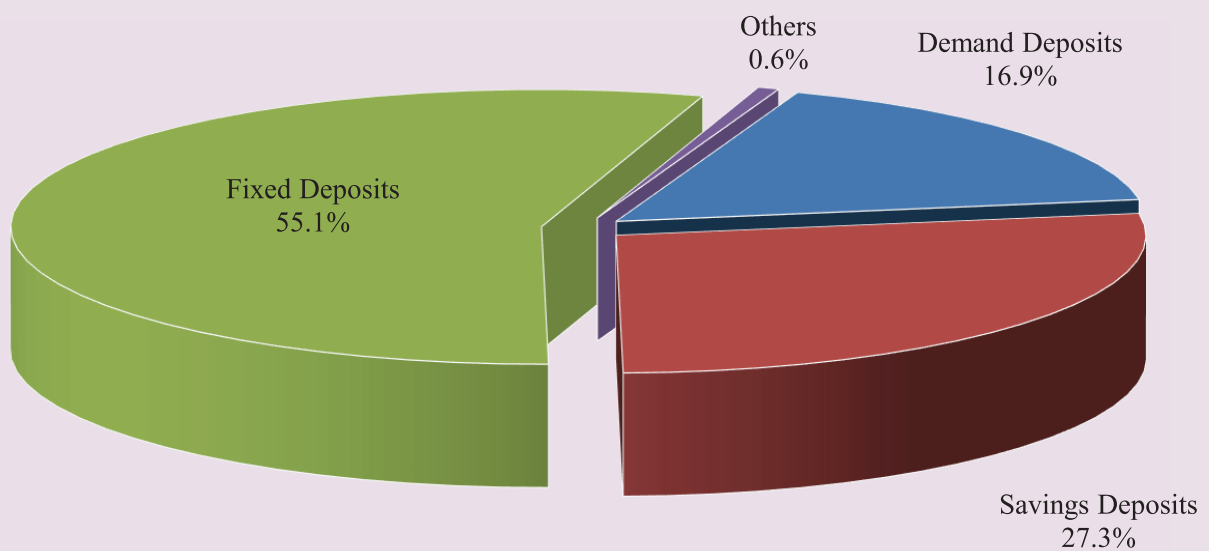


Table 22: Credit Granted by Micro-Finance Institutions*

Period	Numbers of Branches (Including H.Q)	Number of Borrowers**	Loan Outstanding (In Billion KHR)	Interest Rate	
				Monthly	Annually
Dec-17	1,417	1,776,467	17,236	1.4%-2.5%	16.9%-28.8%
Dec-18	1,423	1,872,916	21,813	1.2%-2.0%	15.1%-24.0%
Dec-19	1,453	2,109,170	29,357	1.1%-1.6%	13.4%-18.7%
Dec-20	1,171	1,919,926	27,527	1.1%-1.6%	13.4%-18.3%
Dec-21	1,066	1,897,878	31,723	1.1%-1.5%	13.3%-17.6%
Dec-22	1,108	2,129,150	38,932	1.1%-1.4%	13.0%-17.3%
2023					
Jun	1,121	2,185,693	40,198	1.0%-1.5%	11.5%-17.9%
Jul	1,120	2,188,142	40,269	0.9%-1.5%	10.2%-18.1%
Aug	1,098	2,163,738	40,710	0.8%-1.5%	10.2%-18.3%
Sep	913	1,625,506	21,240	1.0%-1.5%	12.2%-18.1%
Oct	914	1,627,775	21,299	1.0%-1.5%	12.1%-18.1%
Nov	912	1,626,914	21,182	1.0%-1.5%	12.1%-18.1%
Dec	912	1,620,818	21,036	1.0%-1.5%	12.1%-18.1%
2024					
Jan	914	1,619,022	21,086	1.0%-1.5%	12.1%-18.1%
Feb	911	1,617,466	21,065	1.0%-1.5%	12.1%-18.1%
Mar	908	1,614,548	20,973	1.0%-1.5%	11.9%-18.1%
Apr	913	1,606,045	20,975	1.0%-1.5%	12.1%-18.1%
May	911	1,606,776	21,076	1.0%-1.5%	12.0%-18.1%
Jun	912	1,601,907	21,256	1.0%-1.5%	12.0%-18.2%
Jul	913	1,604,177	21,352	1.0%-1.5%	12.0%-18.2%
Aug	913	1,603,773	21,279	0.9%-1.5%	10.0%-18.2%
Sep	912	1,603,371	21,455	0.9%-1.5%	10.3%-18.2%
Oct	917	1,598,572	21,523	0.9%-1.5%	10.2%-18.2%
Nov	916	1,579,654	21,392	0.9%-1.5%	10.3%-18.2%
Dec	914	1,556,426	21,446	1.0%-1.5%	11.9%-18.2%
2025					
Jan	911	1,554,667	21,636	1.0%-1.5%	11.9%-18.2%
Feb	915	1,553,494	21,796	1.0%-1.5%	11.9%-18.2%
Mar	916	1,555,177	21,948	1.0%-1.5%	11.8%-18.2%
Apr	914	1,720,604	22,025	1.0%-1.5%	12.1%-18.3%
May	915	1,718,674	22,130	1.0%-1.5%	11.9%-18.3%

* Including MFI and MDI

** Including Individuals and Legal Entities

*** Revised Data

Table 23: KHR-Denominated Checks Clearing through Clearing House

Date	Number of Cleared Check	Number of Working Day	Number of Cleared Check Per Day	Total Amount (In Billion KHR)	Daily Average Amount (In Billion KHR)	Returned Check	
						Number	Amount (In Billion KHR)
	1	2	3 = 1/2	4	5 = 4/2	6	7
Dec-19	3,734	21	178	1,584.1	75.4	18	11.33
Total	41,696	236	177	13,602.7	57.6	206	630.84
Dec-20	3,264	23	142	1,839.6	80.0	5	0.57
Total	35,570	240	148	22,955.3	95.6	101	5,074.92
Dec-21	3,028	23	132	1,763.0	76.7	14	26.86
Total	31,749	242	131	19,089.4	78.9	99	466.43
Dec-22	3,106	22	141	1,898.0	86.3	8	1.79
Total	33,608	251	134	19,831.3	79.0	68	88.91
2023							
Sep	2,793	21	133	1,730.6	82.4	9	1.55
Oct	2,792	21	133	1,682.6	80.1	22	9.83
Nov	2,553	19	134	1,665.6	87.7	26	1.80
Dec	3,179	21	151	2,233.3	106.3	14	56.82
Total	34,109	250	136	22,002.8	88.0	154	134.16
2024							
Jan	2,706	22	123	1,867.4	84.9	6	5.83
Feb	2,859	21	136	1,410.9	67.2	8	3.51
Mar	2,822	20	141	2,019.4	101.0	8	1.60
Apr	2,718	20	136	1,750.6	87.5	14	93.25
May	2,773	20	139	1,745.9	87.3	11	3.27
Jun	2,639	19	139	1,476.0	77.7	6	1.73
Jul	2,815	23	122	1,839.9	80.0	8	0.80
Aug	2,695	21	128	1,740.0	82.9	5	5.73
Sep	2,615	20	131	1,784.3	89.2	10	4.41
Oct	2,487	18	138	1,816.2	100.9	12	0.43
Nov	2,550	19	134	1,983.0	104.4	8	10.25
Dec	3,027	22	138	2,216.0	100.7	2	0.69
Total	32,706	245	133	21,649.6	88.4	98	131.50
2025							
Jan	2,594	21	124	1,948.9	92.8	21	10.35
Feb	2,602	20	130	4,050.3	202.5	16	2,001.96
Mar	2,709	21	129	2,412.2	114.9	8	30.52
Apr	2,270	19	119	1,859.9	97.9	5	1.50
May	2,305	19	121	1,729.9	91.1	11	0.44
Total	12,480	100	125	12,001.3	120.0	61	2,044.77

Table 24: USD-Denominated Checks Clearing through Clearing House

Date	Number of	Number of	Number of	Total	Daily Average	Returned Checks	
	Checks	days	Cleared Check	Amount	Amount	Number	Amount
	Cleared	Cleared	per Day	(In Million USD)	(In Million USD)		(In Million USD)
	1	2	3 = 1/2	4	5 = 4/2	6	7
Dec-19	121,353	21	5,779	4,448.5	211.8	964	87.1
Total	1,337,800	236	5,669	51,609.1	218.7	10,654	3,779.9
Dec-20	111,749	23	4,859	4,369.7	190.0	714	45.0
Total	1,200,110	240	5,000	50,220.0	209.3	8,620	8,737.8
Dec-21	104,666	23	4,551	5,002.1	217.5	672	65.5
Total	1,077,104	242	4,451	46,380.6	191.7	8,423	517.9
Dec-22	97,561	22	4,435	4,152.9	188.8	948	78.7
Total	1,105,712	251	4,405	53,853.9	214.6	8,739	1,764.0
2023							
Aug	91,909	23	3,996	3,755.6	163.3	1,059	74.0
Sep	83,733	21	3,987	3,399.1	161.9	963	52.6
Oct	84,135	21	4,006	3,327.6	158.5	920	55.9
Nov	80,278	19	4,225	3,245.3	170.8	935	78.6
Dec	91,040	21	4,335	4,284.5	204.0	957	58.5
Total	1,041,710	250	4,167	44,433.1	177.7	11,597	880.6
2024							
Jan	89,845	22	4,084	3,929.3	178.6	907	205.6
Feb	79,161	21	3,770	3,504.7	166.9	865	49.7
Mar	83,061	20	4,153	3,939.2	197.0	795	60.1
Apr	83,184	20	4,159	3,731.5	186.6	847	56.5
May	87,578	20	4,379	4,040.0	202.0	989	70.2
Jun	79,542	19	4,186	3,726.2	196.1	797	130.5
Jul	93,088	23	4,047	4,170.8	181.3	841	43.8
Aug	86,462	21	4,117	14,139.5	673.3	794	10,063.1
Sep	84,895	20	4,245	3,743.1	187.2	777	110.1
Oct	77,084	18	4,282	4,335.5	240.9	700	839.4
Nov	78,910	19	4,153	3,677.8	193.6	804	56.5
Dec	91,975	22	4,181	4,656.1	211.6	1,064	105.4
Total	1,014,785	245	4,142	57,593.7	235.1	10,180	11,790.8
2025							
Jan	81,361	21	3,874	4,178.7	199.0	866	65.0
Feb	76,927	20	3,846	4,075.9	203.8	649	76.8
Mar	86,349	21	4,112	4,563.7	217.3	862	104.4
Apr	79,033	19	4,160	4,134.8	217.6	603	48.2
May	83,700	19	4,405	4,281.9	225.4	764	81.3
Total	407,370	100	4,074	21,235.0	212.4	3,744	375.6

Table 25: Visitor Arrivals in Cambodia

	2025			% of Total		% Change	
	Mar	Apr	May	Apr	May	Apr/Mar	May/Apr
(Mode of Arrival)							
Phnom Penh International Airport	182,521	173,179	168,301	30.6	30.7	-5.1	-2.8
Kong Keng International Airport	4,149	3,940	4,331	0.7	0.8	-5.0	9.9
Siem Reap International Airport	67,703	45,306	31,811	8.0	5.8	-33.1	-29.8
Land	132,766	334,862	339,760	59.2	62.1	152.2	1.5
Boat	9,493	7,956	3,170	1.4	0.6	-16.2	-60.2
Preah Vihea	0	0	0	0.0	0.0	0.0	0.0
Total	574,223	565,243	547,373	100.0	100.0	-1.6	-3.2
(Arrival by Purpose of Visit)							
Tourist	423,924	405,009	395,377	71.7	72.2	-4.5	-2.4
Business and Professional	140,315	149,295	143,576	26.4	26.2	6.4	-3.8
Others and not specified	9,984	10,939	8,420	1.9	1.5	9.6	-23.0
Total	574,223	565,243	547,373	100.0	100.0	-1.6	-3.2
(Top-Ten Countries of Passenger Arrivals)							
Thailand	149,732	172,468	182,035	30.5	33.3	15.2	5.5
Vietnam	102,513	105,790	104,087	18.7	19.0	3.2	-1.6
China (PRC)	101,784	101,349	101,468	17.9	18.5	-0.4	0.1
Lao PDR	15,609	16,786	23,946	3.0	4.4	7.5	42.7
Indonesia	12,647	15,345	13,802	2.7	2.5	21.3	-10.1
United States of America	22,271	16,932	12,286	3.0	2.2	-24.0	-27.4
South Korea	12,299	10,706	10,090	1.9	1.8	-13.0	-5.8
Malaysia	7,550	8,399	8,725	1.5	1.6	11.2	3.9
United Kingdom	17,349	13,136	8,105	2.3	1.5	-24.3	-38.3
Taiwan	8,356	7,961	7,361	1.4	1.3	-4.7	-7.5
Others	124,113	96,371	75,468	17.0	13.8	-22.4	-21.7
Total	574,223	565,243	547,373	100.0	100.0	-1.6	-3.2

Source: Ministry of Tourism

** Increased in times, not in percentage (%).*

Table 26: Cambodia's Imports and Exports

	(In Billion KHR)						
	2025			Change in Billion KHR		Change in %	
	Mar	Apr	May	Apr/Mar	May/Apr	Apr/Mar	May/Apr
Imports by Commodity							
Medicine	99.5	80.3	114.3	-19.2	34.0	-19.3	42.3
Cigarette	25.3	100.3	78.5	74.9	-21.8	295.9	-21.7
Food and Beverage	481.7	456.8	492.5	-24.9	35.7	-5.2	7.8
Equipment Construction	432.1	545.2	553.7	113.2	8.5	26.2	1.6
Cement	7.4	5.3	5.6	-2.1	0.3	-28.0	6.1
Steel	288.7	304.3	344.1	15.6	39.8	5.4	13.1
Phones	10.5	4.1	5.6	-6.4	1.5	-61.1	37.4
T.V	2.1	2.3	1.8	0.2	-0.5	10.1	-20.5
Other Electronic Equipment	125.9	166.9	432.0	41.0	265.1	32.6	158.8
Garment	280.2	265.4	315.5	-14.7	50.1	-5.3	18.9
Fabric	2,036.1	2,186.1	2,237.0	150.1	50.9	7.4	2.3
Vehicle	720.9	695.7	763.8	-25.2	68.1	-3.5	9.8
Equipment of Cold	42.5	31.2	39.8	-11.3	8.7	-26.7	27.9
Gold	0.0	0.0	10.4	0.0	10.4	-	-
Oil	1,117.5	1,088.1	1,187.7	-29.5	99.7	-2.6	9.2
Fertilizer	55.2	86.8	119.7	31.6	32.9	57.3	37.9
Others	4,639.5	5,169.9	5,792.6	530.4	622.7	11.4	12.0
Total Imports	10,365.0	11,188.7	12,494.8	823.6	1,306.2	7.9	11.7
Exports by Commodity							
Garment	2,818.0	2,840.6	4,290.7	22.7	1,450.1	0.8	51.0
Footwear	634.4	647.5	876.2	13.1	228.6	2.1	35.3
Other Textile Product	782.7	724.9	1,055.3	-57.8	330.4	-7.4	45.6
Electrical Part	190.0	174.8	256.8	-15.2	82.0	-8.0	46.9
Vehicle and Bicycle Part	97.4	85.7	99.5	-11.8	13.9	-12.1	16.2
Bicycle	228.1	207.5	228.9	-20.6	21.4	-9.0	10.3
Wood Products	174.7	178.0	217.1	3.2	39.2	1.9	22.0
Rice	220.2	195.1	172.7	-25.1	-22.4	-11.4	-11.5
Rubber	90.5	80.9	154.5	-9.5	73.6	-10.5	90.9
Fish and Other Agricultural Products	2,501.1	2,004.2	833.1	-496.9	-1,171.1	-19.9	-58.4
Others	2,073.3	2,017.6	2,540.7	-55.7	523.1	-2.7	25.9
Total Exports	9,810.3	9,156.8	10,725.5	-653.5	1,568.7	-6.7	17.1

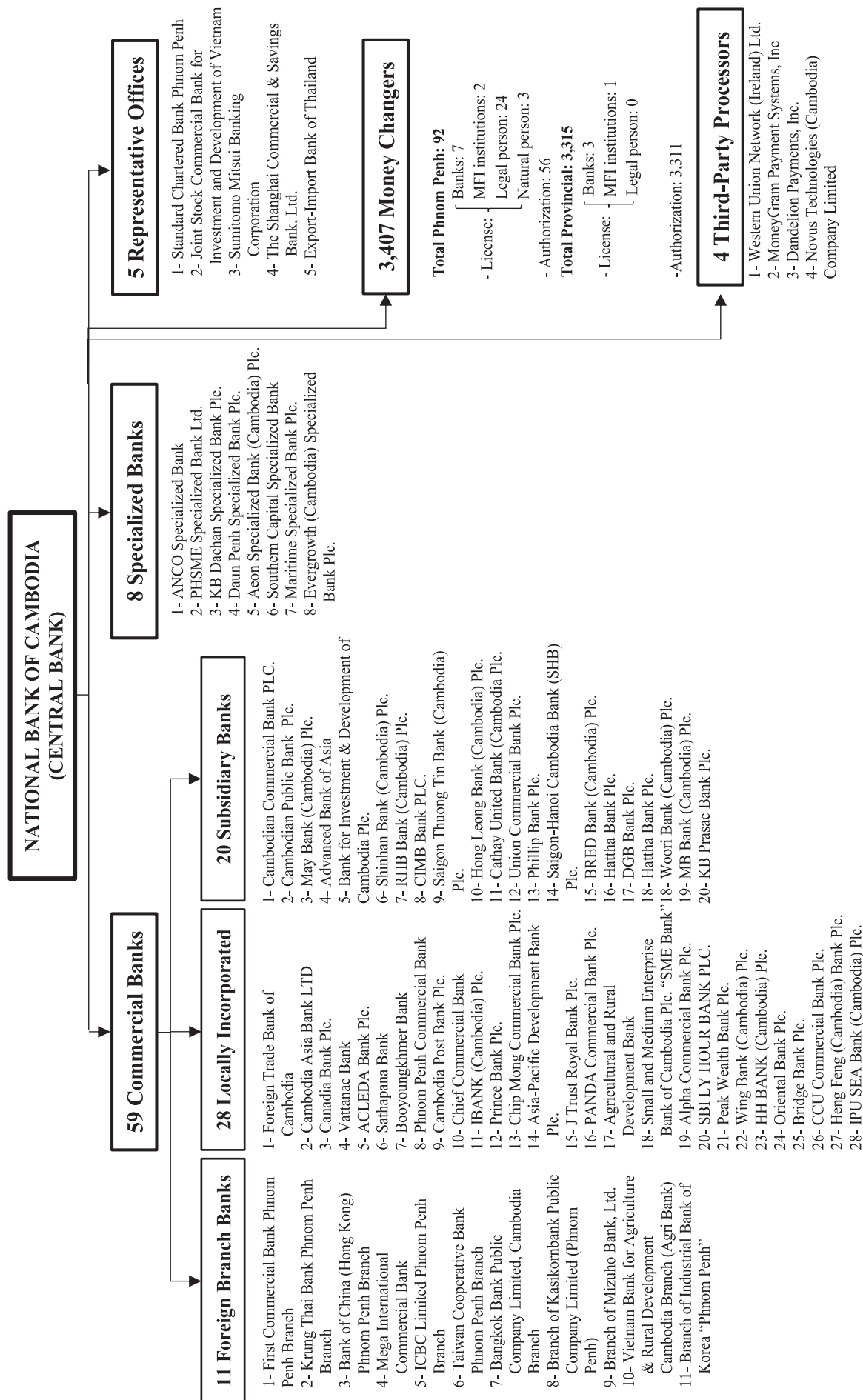
Source: General Department of Cambodia Customs and Excise

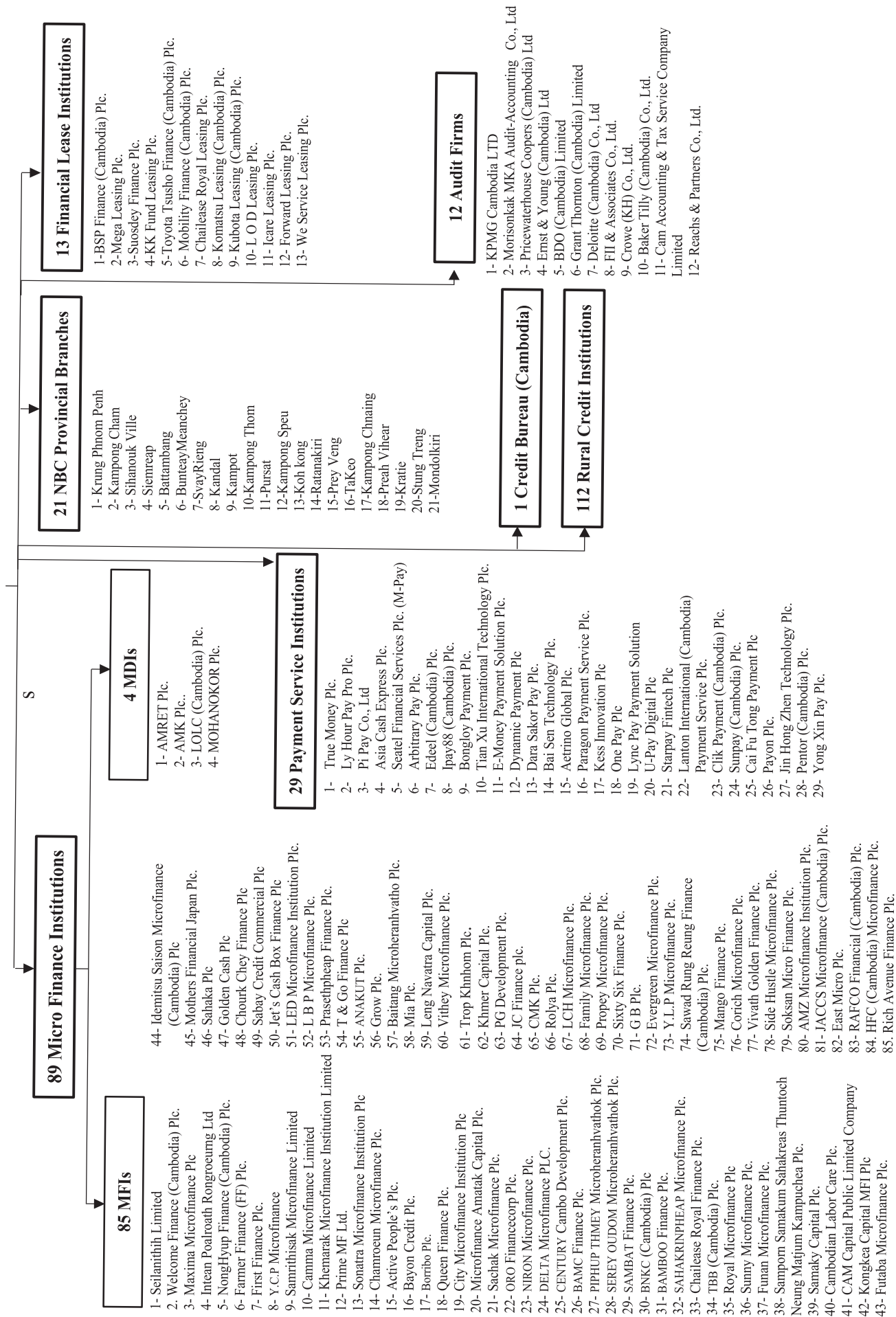
** Increased in times, not in percentage (%).*

*** Revised Data*

Table 27: THE BANKING SYSTEM IN CAMBODIA

As of 31 May 2025





21 NBC Provincial Branches

- 1- Krung Phnom Penh
- 2- Kampong Cham
- 3- Sihanouk Ville
- 4- Siemreap
- 5- Battambang
- 6- Banteay Meanchey
- 7- Svay Rieng
- 8- Kandal
- 9- Kampot
- 10- Kampong Thom
- 11- Pursat
- 12- Kampong Speu
- 13- Koh kong
- 14- Ratanakiri
- 15- Prey Veng
- 16- TaKeo
- 17- Kampong Chhnang
- 18- Preah Vihear
- 19- Kratie
- 20- Stung Treng
- 21- Mondulkiri

12 Audit Firms

- 1- KPMG Cambodia LTD
- 2- Morisonkak MKA Audit-Accounting Co., Ltd
- 3- Pricewaterhouse Coopers (Cambodia) Ltd
- 4- Ernst & Young (Cambodia) Ltd
- 5- BDO (Cambodia) Limited
- 6- Grant Thornton (Cambodia) Limited
- 7- Deloitte (Cambodia) Co., Ltd
- 8- FII & Associates Co., Ltd.
- 9- Crowe (KH) Co., Ltd.
- 10- Baker Tilly (Cambodia) Co., Ltd.
- 11- Cam Accounting & Tax Service Company Limited
- 12- Reachs & Partners Co., Ltd.

13 Financial Lease Institutions

- 1- BSP Finance (Cambodia) Plc.
- 2- Mega Leasing Plc.
- 3- Suosdey Finance Plc.
- 4- KK Fund Leasing Plc.
- 5- Toyota Tsusho Finance (Cambodia) Plc.
- 6- Mobility Finance (Cambodia) Plc.
- 7- Chailease Royal Leasing Plc.
- 8- Komatsu Leasing (Cambodia) Plc.
- 9- Kubota Leasing (Cambodia) Plc.
- 10- L O D Leasing Plc.
- 11- Icare Leasing Plc.
- 12- Forward Leasing Plc.
- 13- We Service Leasing Plc.

1 Credit Bureau (Cambodia)

112 Rural Credit Institutions

អ៊ីនធឺណែត
INTERNET

: www.nbc.gov.kh គឺជាគេហទំព័ររបស់ធនាគារជាតិនៃកម្ពុជា។ ទិន្នន័យថ្មីៗក្នុងគេហទំព័រ និង ទិន្នន័យបន្តបន្ទាប់ទៀត ត្រូវបាននិងកំពុងដាក់បញ្ចូលទៅក្នុងប្រព័ន្ធទិន្នន័យ តាមធនធានដែលមាន។ លើសពីនេះទៀត គេហទំព័រនេះ គឺជាទីតាំងដ៏ល្អបំផុតដើម្បីទទួលបានទិន្នន័យសង្ខេបនៃការចេញផ្សាយចុងក្រោយបង្អស់។

www.nbc.gov.kh is the National Bank of Cambodia website. The website new data and metadata are progressively being added to the database, as resources permit. This website is the best place to start for access to summary data from the latest publications.

សេវាព័ត៌មាន
INFORMATION SERVICE

: បុគ្គលិករបស់នាយកដ្ឋានស្ថិតិ នៃធនាគារជាតិនៃកម្ពុជា អាចជួយចង្អុលបង្ហាញ ឬណែនាំអ្នកប្រើប្រាស់ក្នុងការស្វែងរកទិន្នន័យតាមតម្រូវការ។ ការបោះពុម្ពផ្សាយរបស់ធនាគារជាតិនៃកម្ពុជា អាចរកជាប់បាន ហើយសេវាលើការជាប់ប្រចាំអាចរៀបចំបានដែរ។ ចំពោះសេវាលើទិន្នន័យពិសេសផ្សេងទៀតក៏អាចរកបានផងដែរ តាមរយៈការមកជាប់ព្រឹត្តិបត្រដោយផ្ទាល់។

The Statistics Department staff of the National Bank of Cambodia can assist users in addressing their data requirements. The National Bank of Cambodia publications are available for sale and subscription services can be arranged. Other special data services are also available, on a user pays basis.

អាសយដ្ឋានទំនាក់ទំនង
CONTACT DETAILS

ធនាគារជាតិនៃកម្ពុជា

NATIONAL BANK OF CAMBODIA

នាយកដ្ឋានស្ថិតិ

Statistics Department

អគារលេខ ៦៩-៧០ មហាវិថីហាណូយ (លេខ១០១៩) ភូមិបាយាប សង្កាត់ភ្នំពេញថ្មី

ខណ្ឌសែនសុខ រាជធានីភ្នំពេញ

#69-70, Hanoi Blvd. (1019), Phum Bayab, Sangkat Phnom Penh Thmei,

Khan Sen Sok, Phnom Penh

អ៊ីម៉ែល : statistics@nbc.gov.kh

E-mail : statistics@nbc.gov.kh

ទូរស័ព្ទ : (៨៥៥) ២៣ ៧២២ ៥៦៣ – ១១១៥

Telephone : (855) 23 722 563 – 1115

ទូរសារ : (៨៥៥) ២៣ ៤២៦ ១១៧

Facsimile : (855) 23 426 117



ISSN 2074-5680

ផលិតដោយ ធនាគារជាតិនៃកម្ពុជា

Produced by the National Bank of Cambodia